

Figure S3. Minimum Spanning Tree (MST) based on the cgMLST profiles of CC1 *Lm* strains coloured according to sampling session; the cgMLST clusters containing more than two strains are highlighted in red.

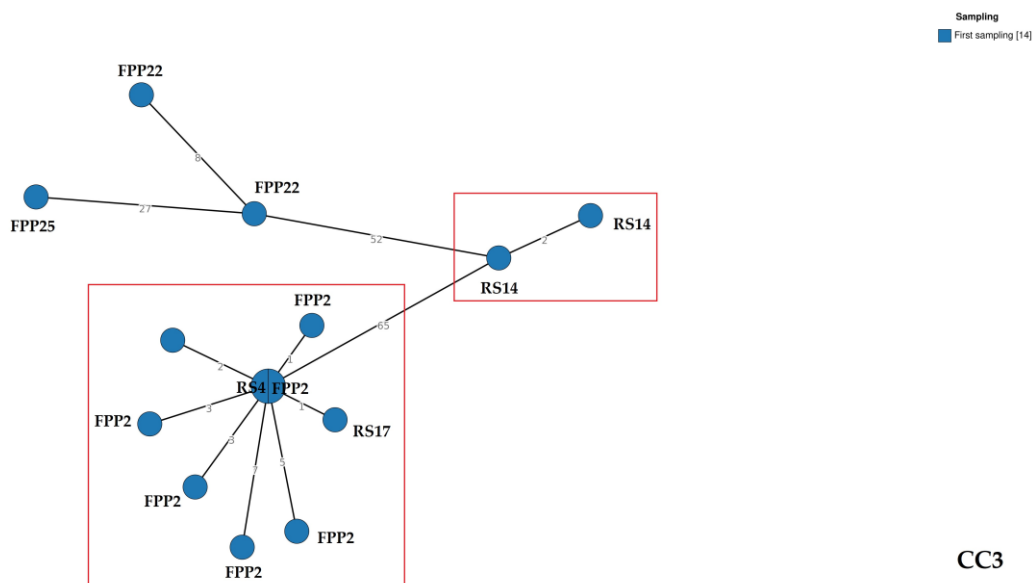


Figure S4. Minimum Spanning Tree (MST) based on the cgMLST profiles of CC3 *Lm* strains coloured according to sampling session; the cgMLST clusters containing more than two strains are highlighted in red.

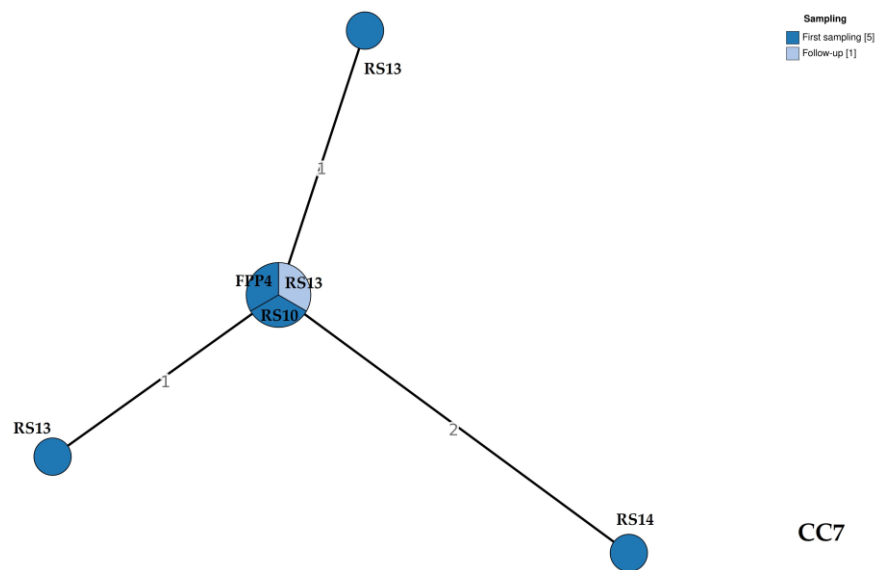


Figure S5. Minimum Spanning Tree (MST) based on the cgMLST profiles of CC7 *Lm* strains coloured according to sampling session; All the strains belonged to the same cgMLST cluster