



Figure S1. Geographical location of the ground ivy collection places



Figure S2. Sample of collected ground ivy (sample G3)

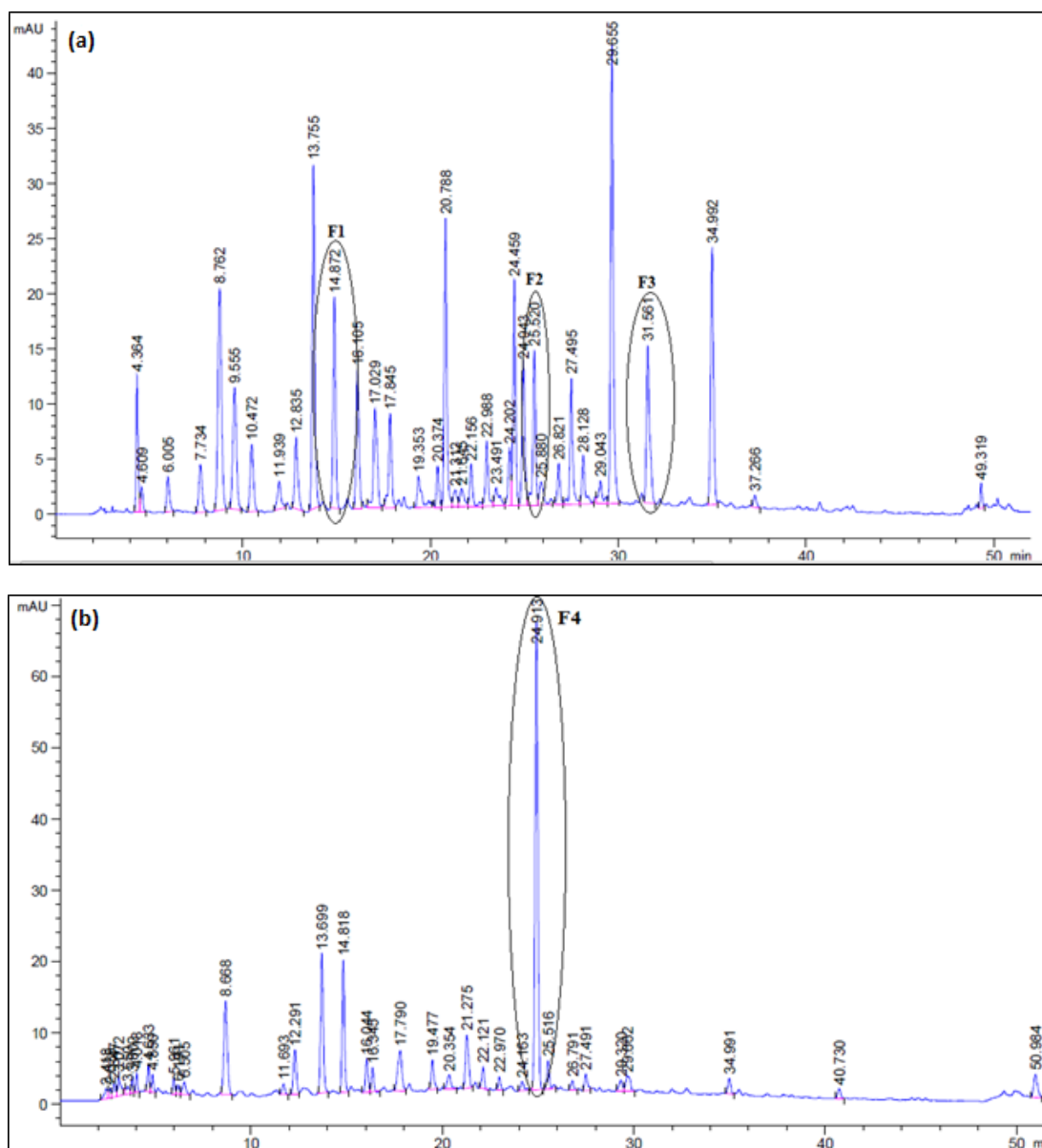


Figure S3. HPLC chromatograms (recorded at 320 nm) of a) MAE extract and (b) SWE extract of sample G5

MS/MS fragmentation profiles of unknown peaks from ground ivy

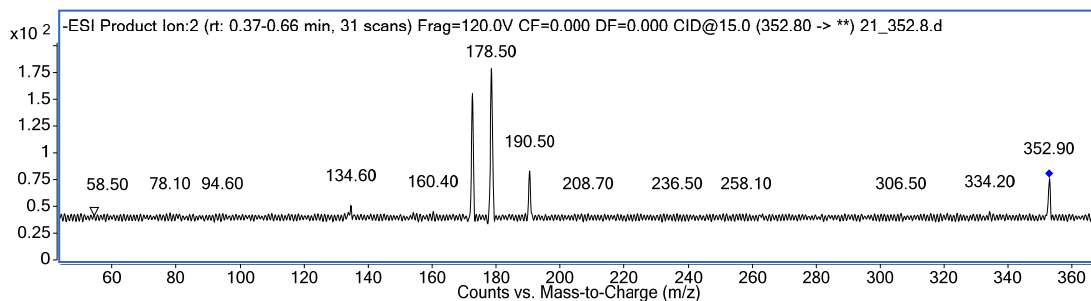


Figure S4. Fragmentation profile of the most dominant ion detected in F1, m/z 353

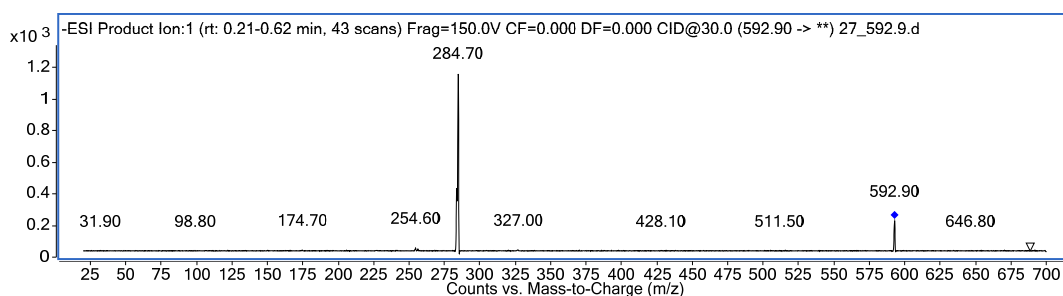


Figure S5. Fragmentation profile of the most dominant ion detected in F2, m/z 593

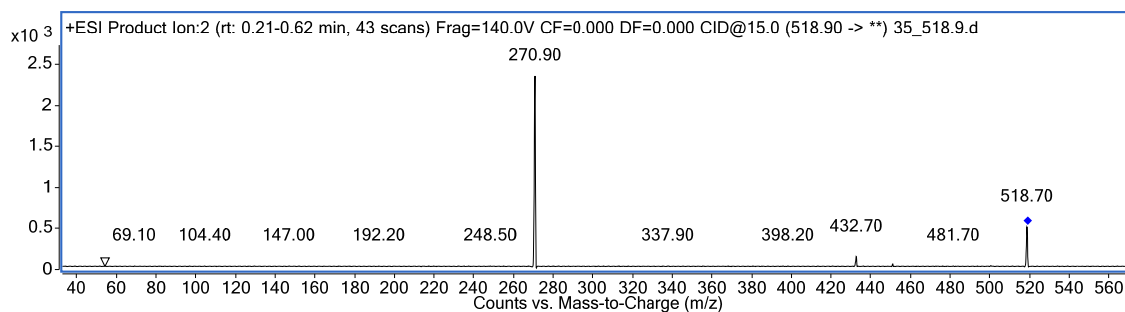


Figure S6. Fragmentation profile of the most dominant ion detected in F3, m/z 519

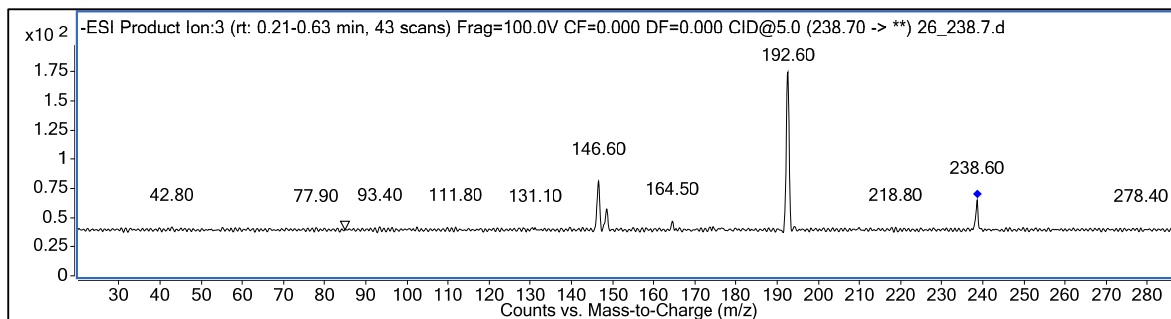


Figure S7. Fragmentation profile of the most dominant ion detected in F4, m/z 239