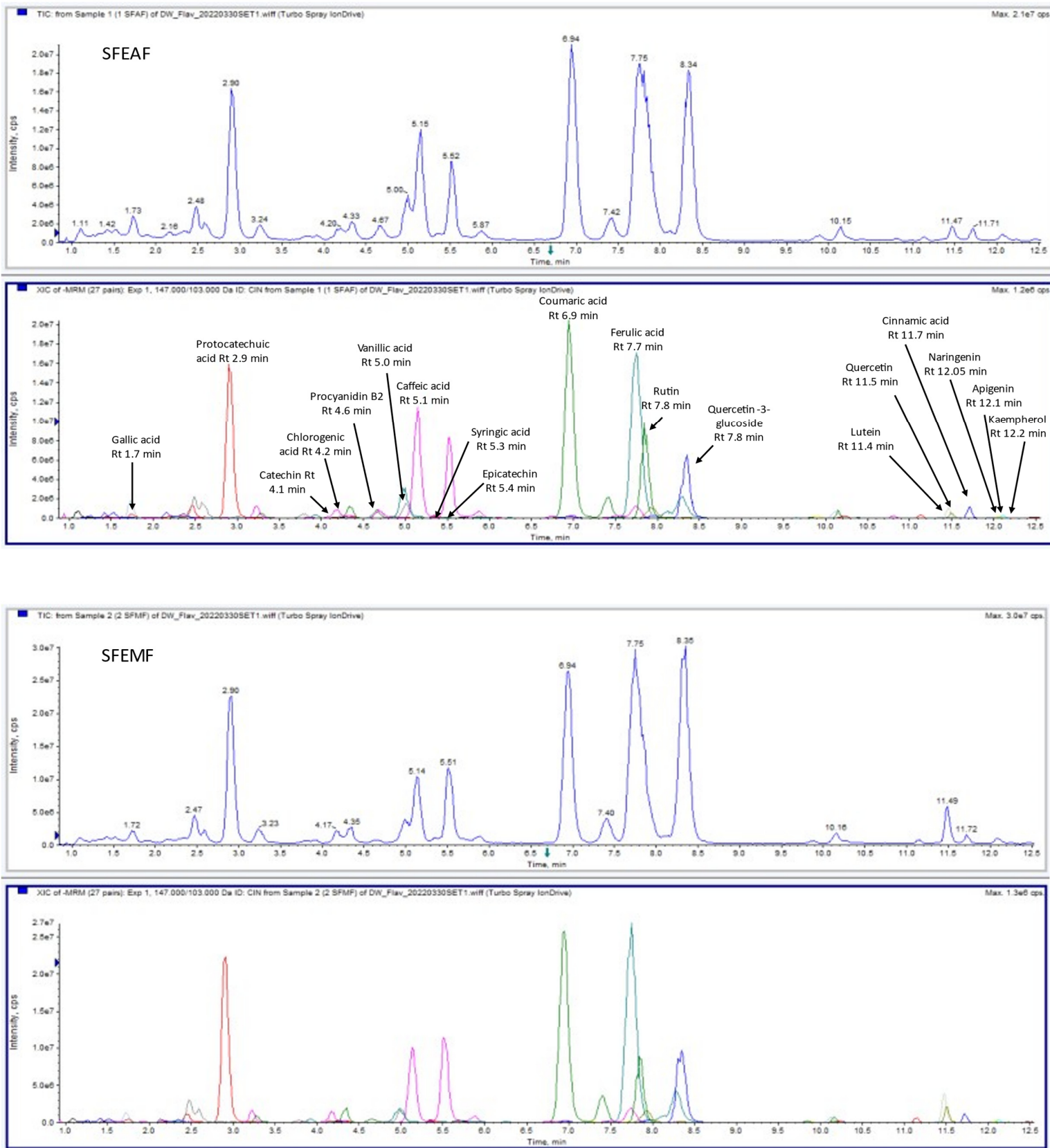
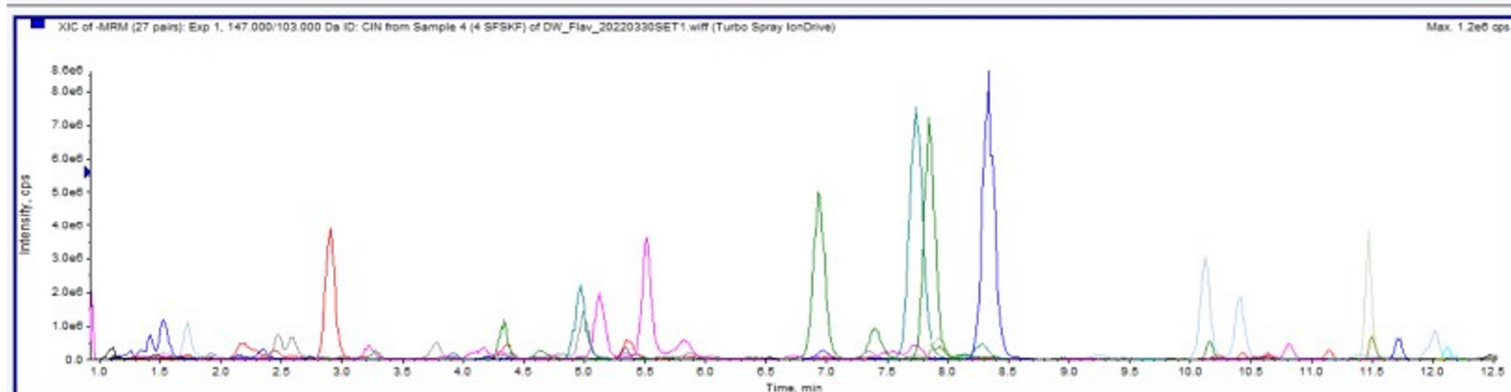
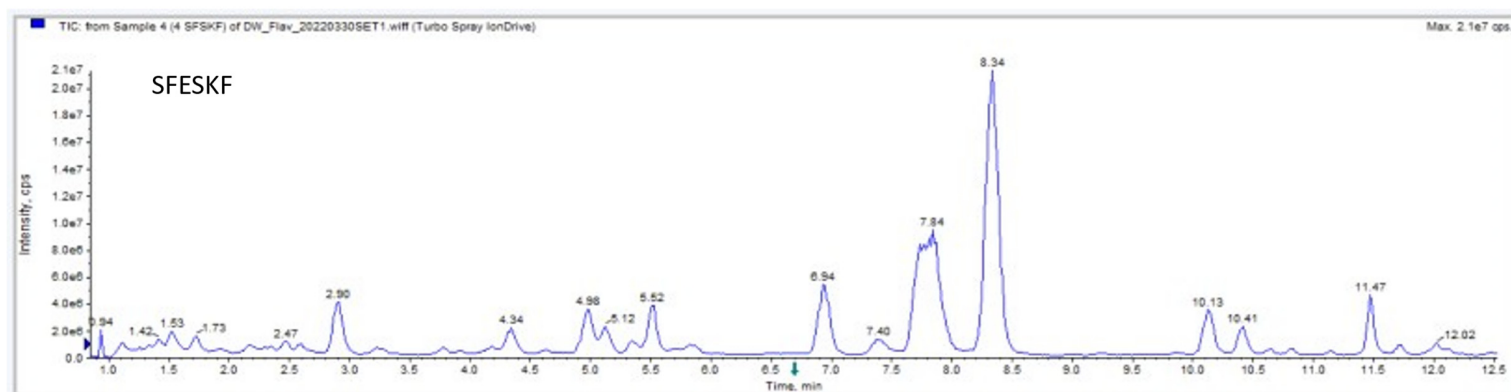
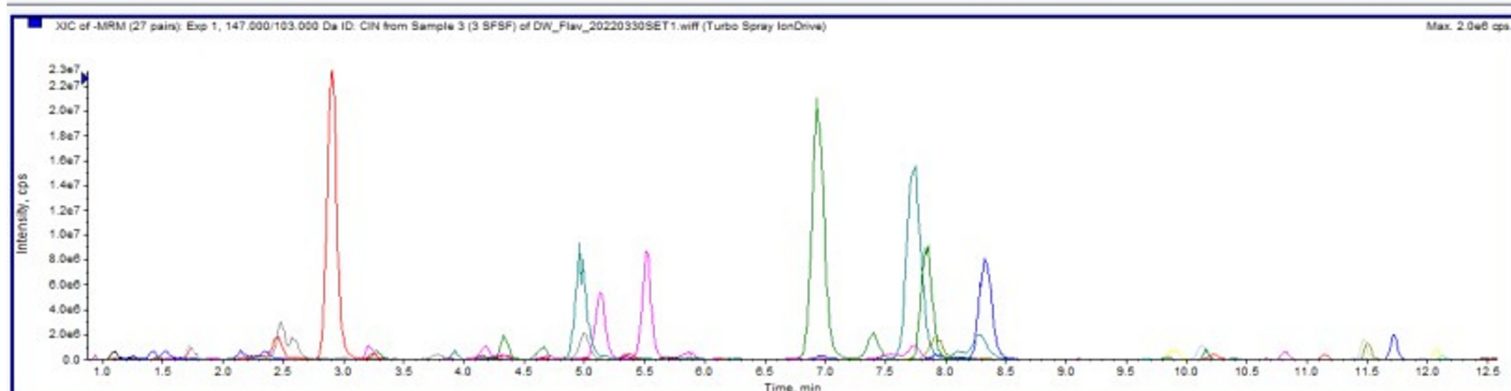
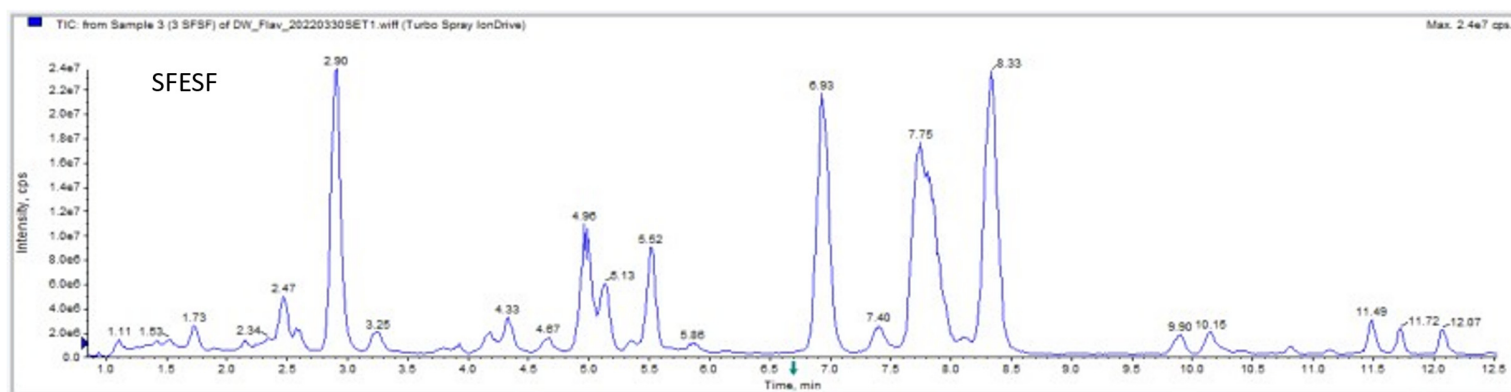
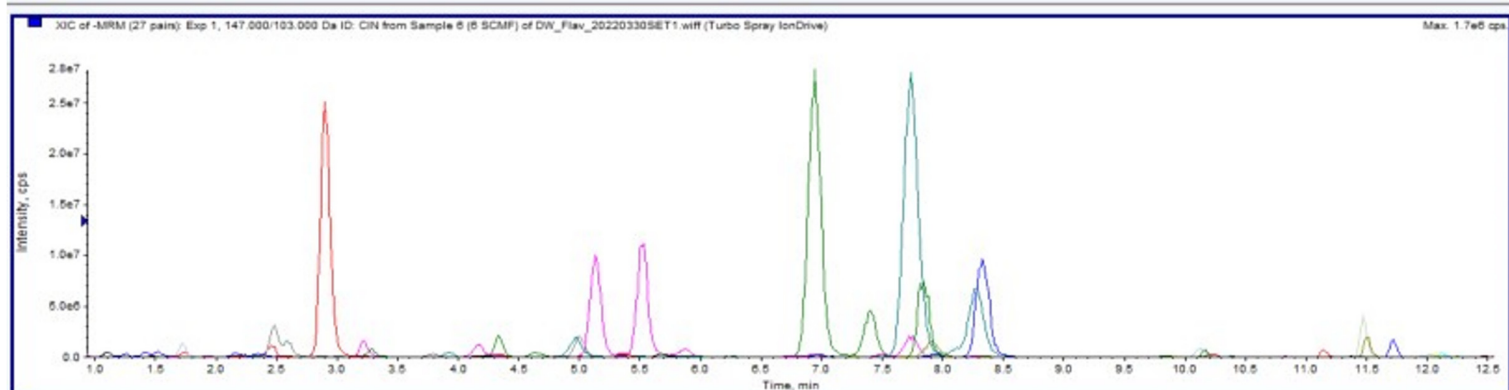
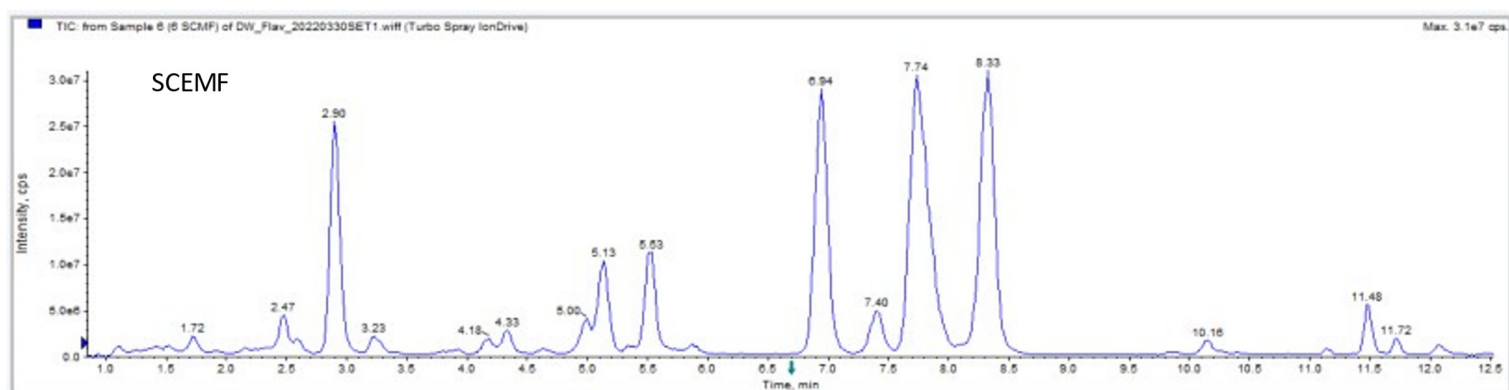
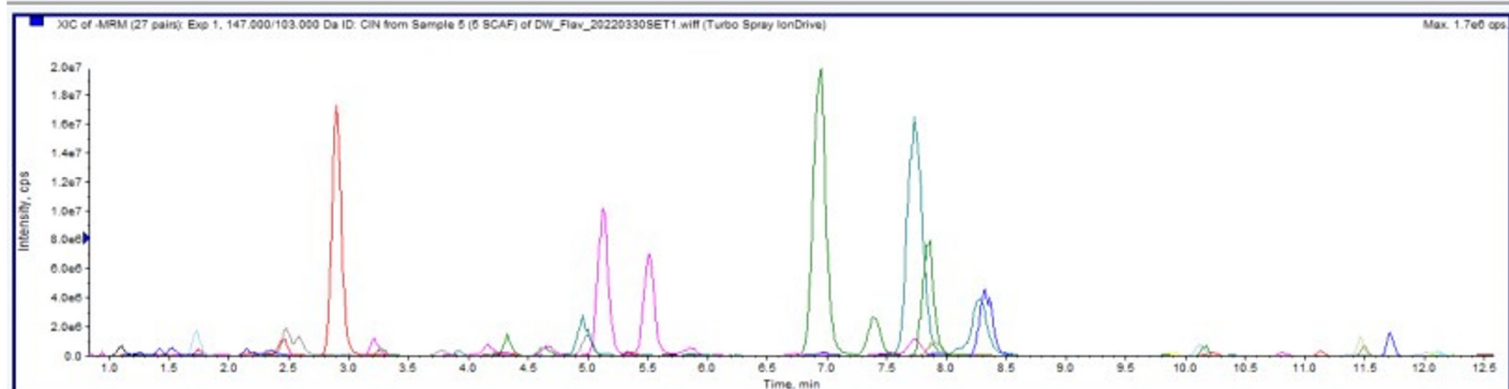
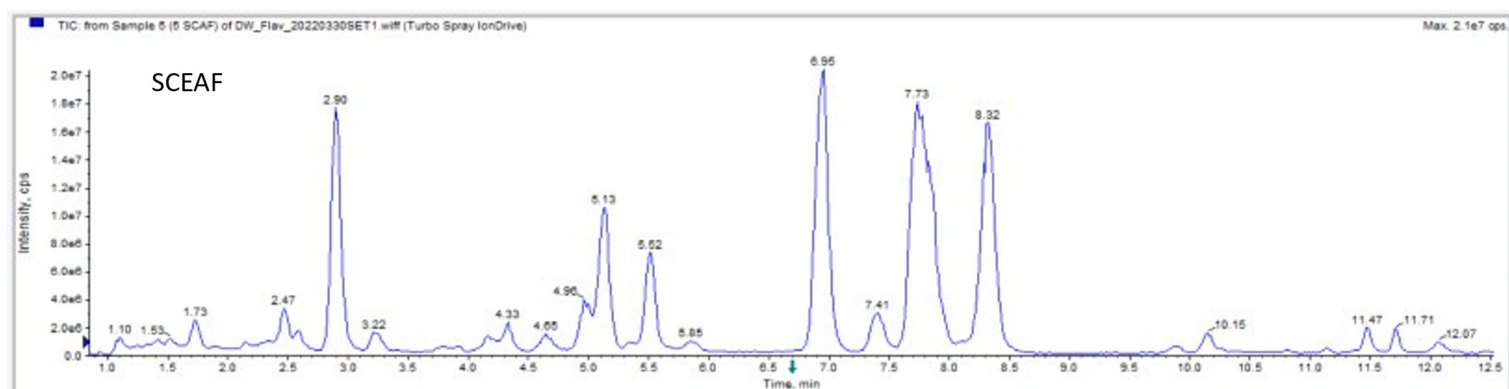
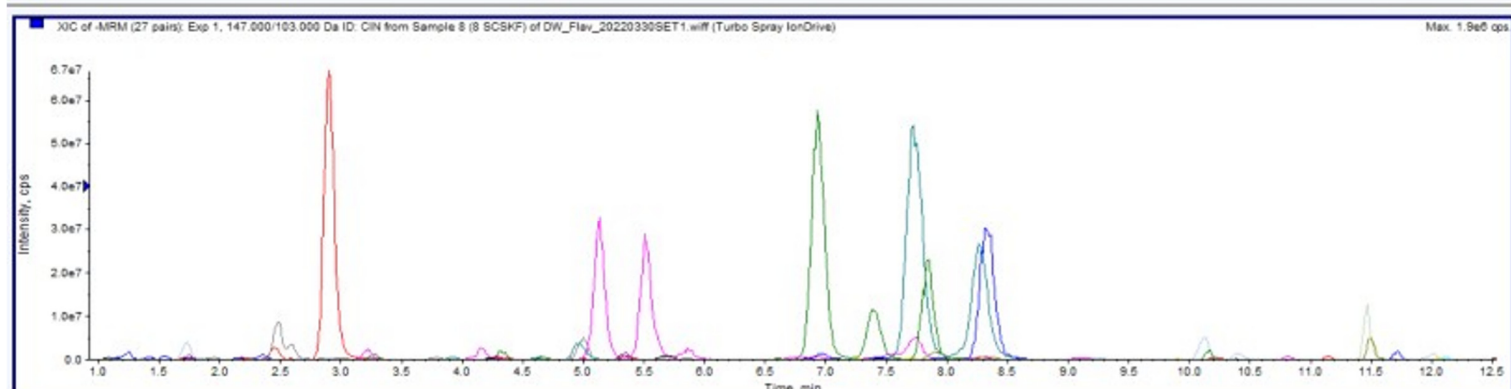
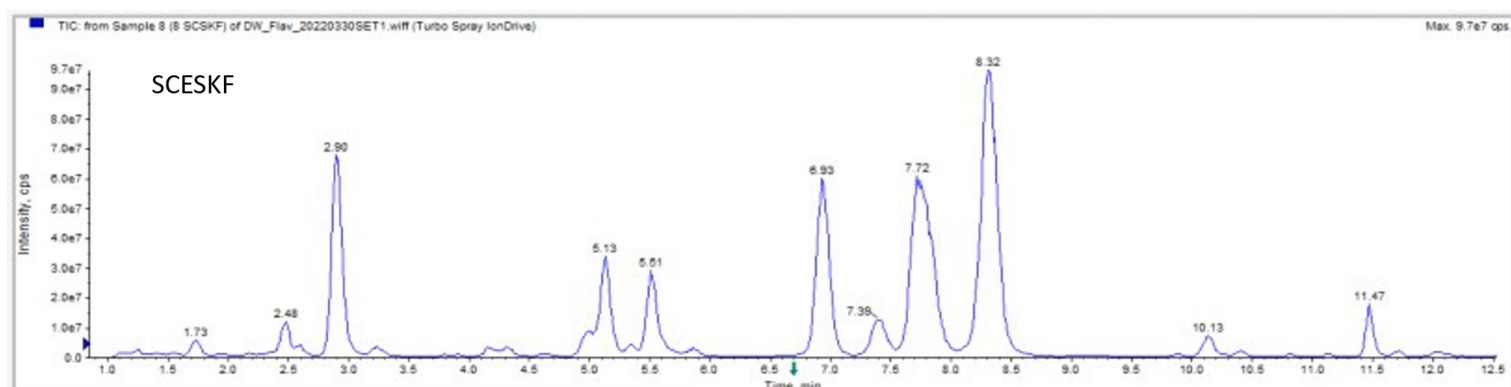
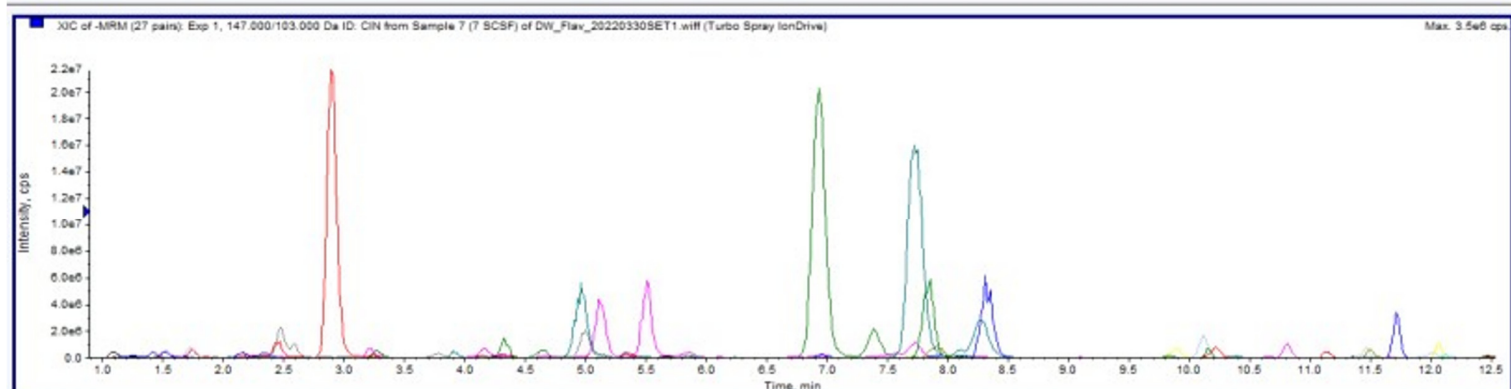
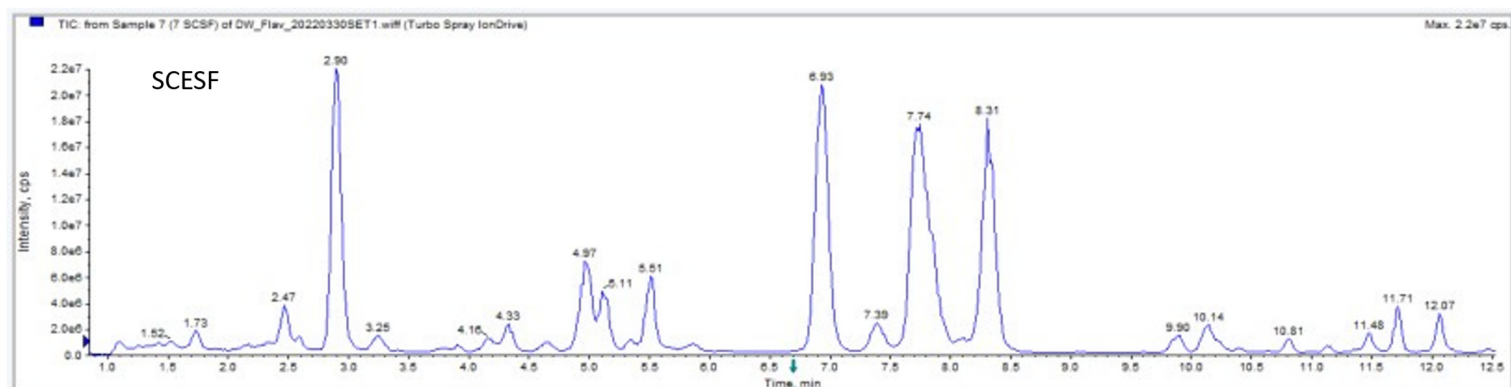


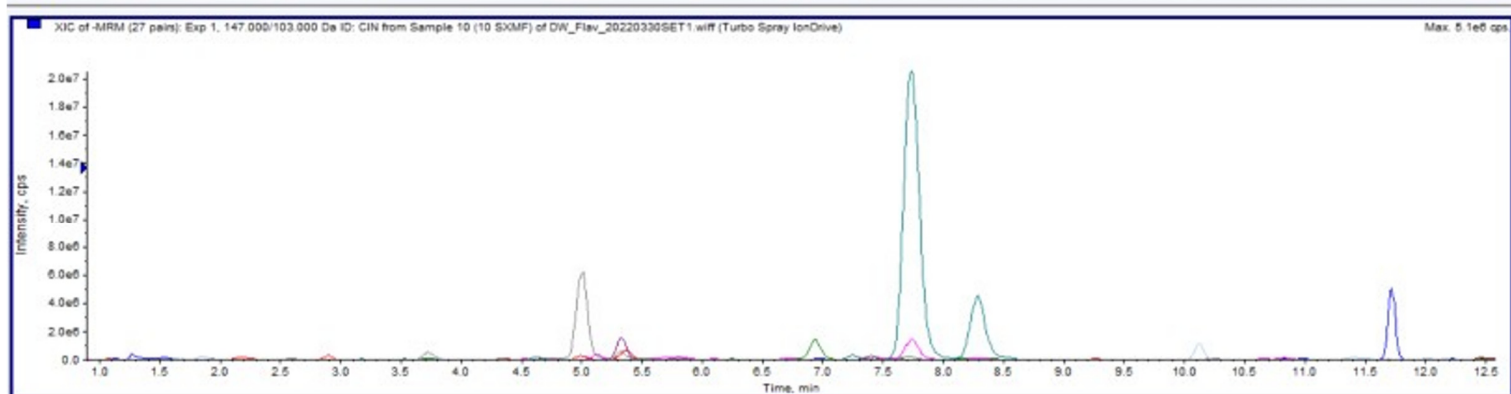
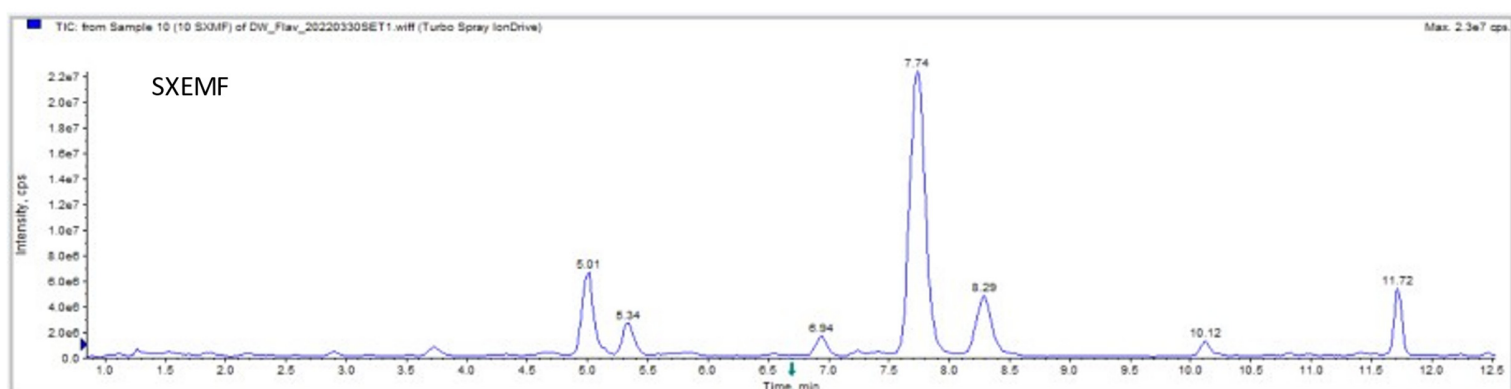
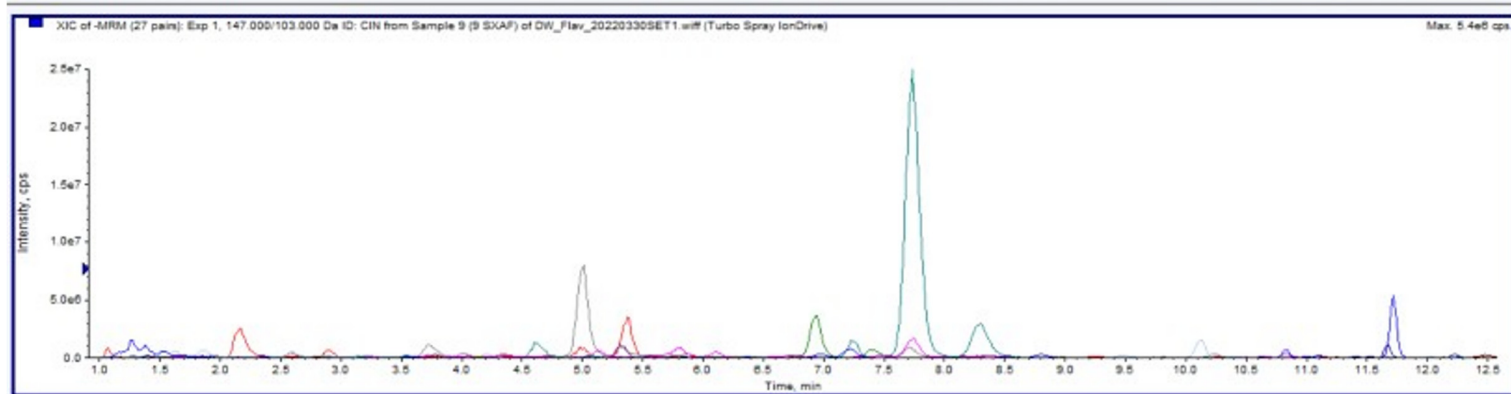
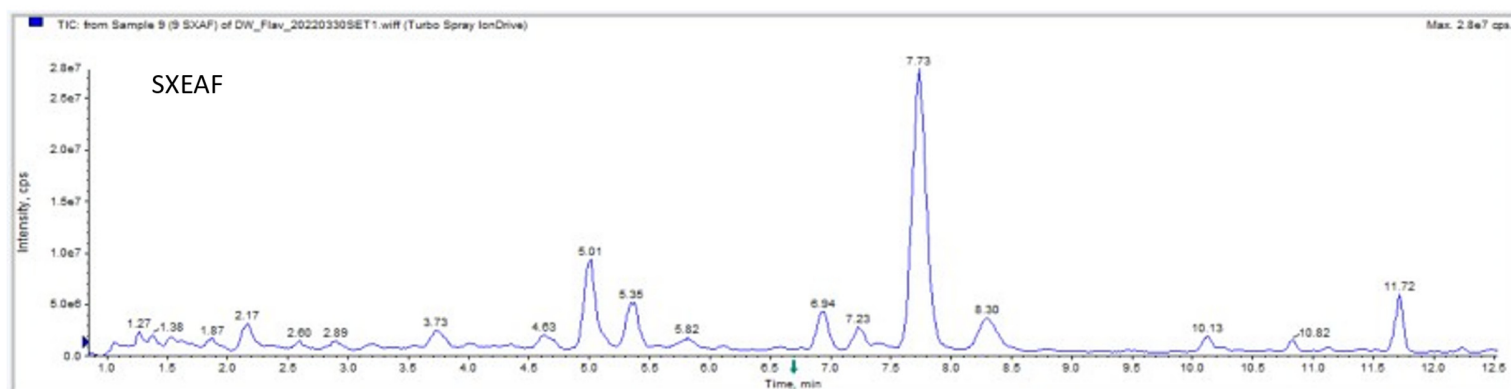
SUPPLEMENTARY MATERIAL (Figure S1)











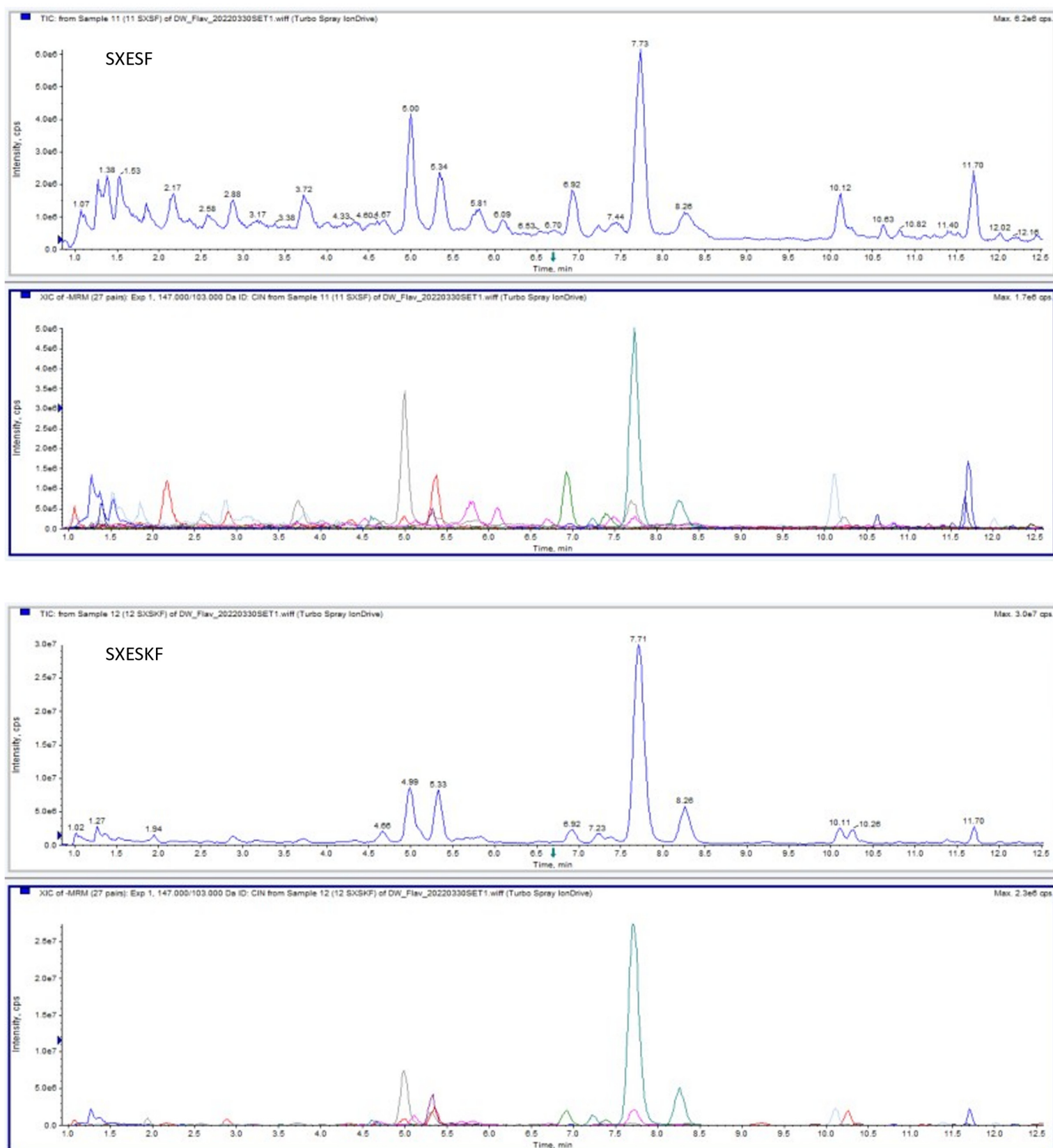


Figure S1: LC/MS chromatogram for phenolic acids and flavonoids in extracts from date flesh of four date fruit varieties (Ambara flesh (AF), Majdool flesh (MF), Sagai flesh (SF) and Sukari flesh (SKF)) using supercritical fluid (SFE), subcritical CO₂ (SCE) and Soxhlet (SXE) extraction methods.