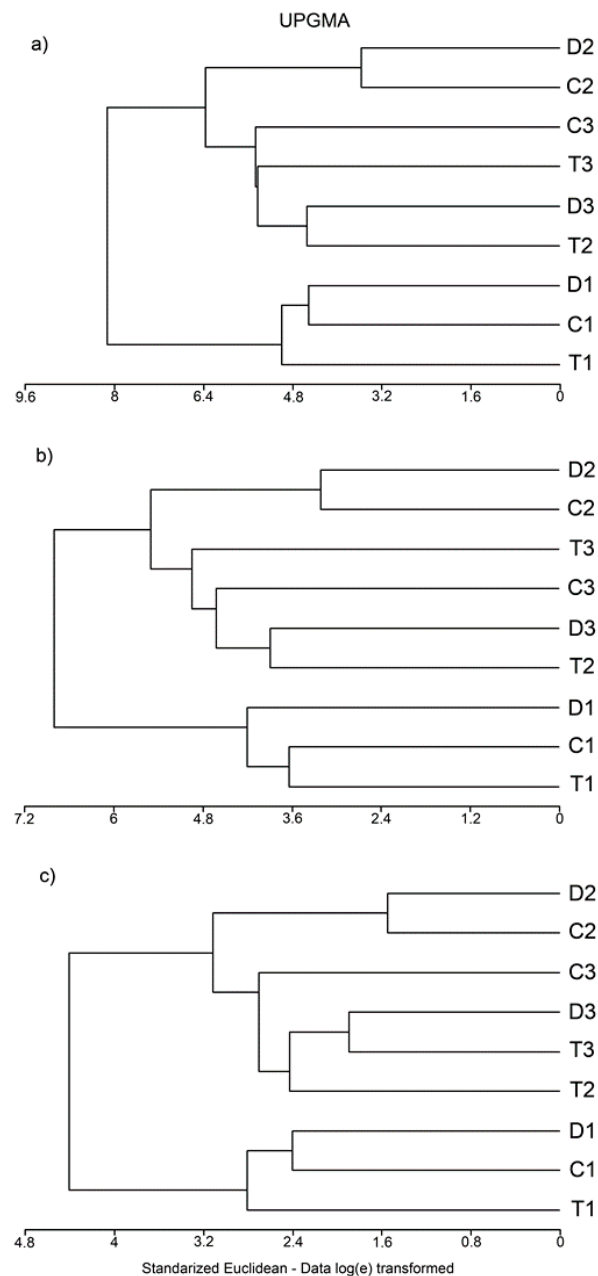


---

# Supplementary Materials: Effects of Soil Quality on the Microbial Community Structure of Poorly Evolved Mediterranean Soils

Antonio Camacho, César Mora, Antonio Picazo, Carlos Rochera, Alba Camacho-Santamans, Daniel Morant, Luis Roca-Pérez, José Joaquín Ramos-Miras, José A. Rodríguez-Martín and Rafael Boluda



**Figure S1.** Clustering of the A-horizon soil samples using Unweighted Pair Group Method with Arithmetic Mean (UPGMA) cluster analysis with standardized euclidean distance. **(A)** Clustering according to both soil properties (physical and chemical variables) and biological and community variables (Shannon Index, Evenness and microbial biomass). **(B)** Clustering according to soil properties (physical and chemical variables). **(C)** Clustering according to biological and community variables (Shannon Index, Evenness and microbial biomass). Soils are labelled as parent material (T: Marl and limestone; C: Limestone; D: Dolomites) and soil use (1: Forest; 2: Shrubland; 3: Crops).

---