

Groce-Wright et al. "A decade of cave drip hydrographs shows spatial and temporal variability in epikarst storage and recharge to Appalachian karst systems"

Supplementary Materials

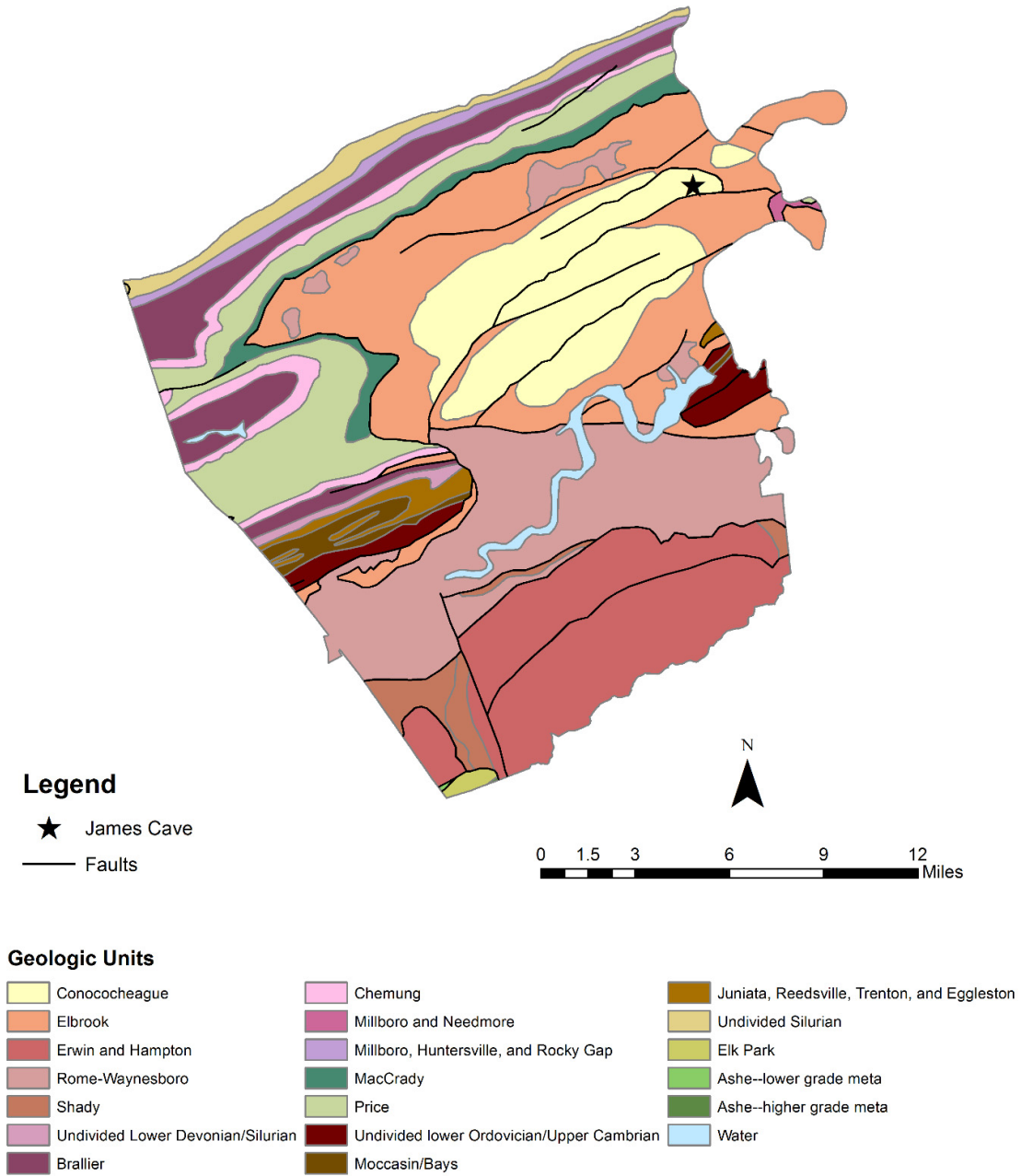


Figure S1. Geologic map of Pulaski County, Virginia USA with location of James Cave noted. Modified from [41].



Figure S2. Photo of drip tarp set-up at MS2. Photo credit: Sarah Eagle.



Figure S3. Photo of rain gain gauge recording drips channeled from drip tarp. Photo credit: Matthew Blower.