

Table S1. Product numbers for RT ² qPCR Primer Assays (purchased from Qiagen, Inc.).			
Gene Name	Gene Symbol	National Center For Biotechnology Information (NCBI) Reference Sequence #	Qiagen Product Number (GeneGlobe ID #)
Glyceraldehyde 3-phosphate dehydrogenase	GAPDH	NM_002046	PPH00150F-200
Interleukin 6	IL6	NM_000600	PPH00560C-200
Interleukin 8 (C-X-C motif chemokine ligand 8)	IL8 (CXCL8)	NM_000584	PPH00568A-200
Monocyte Chemoattractant Protein-1 (C-C motif chemokine ligand 2)	MCP-1 (CCL2)	NM_002982	PPH00192F-200
Heat Shock Protein 47 (serpin family H member 1)	HSP47 (SERPINH1)	NM_001235	PPH01194C-200
Heat shock protein family A (Hsp70) member 1A	HSP70 (HSPA1A)	NM_005345	PPH01193B-200
Heat shock protein family A (Hsp70) member 1B	HSP72 (HSPA1B)	NM_005346	PPH01216B-200
Podoplanin	PDPN	NM_006474	PPH22397A-200
Decorin	DCN	NM_001920	PPH01900A-200
Transglutaminase 2	TGM2	NM_004613	PPH23362A-200
Versican	VCAN	NM_004385	PPH06098D-200

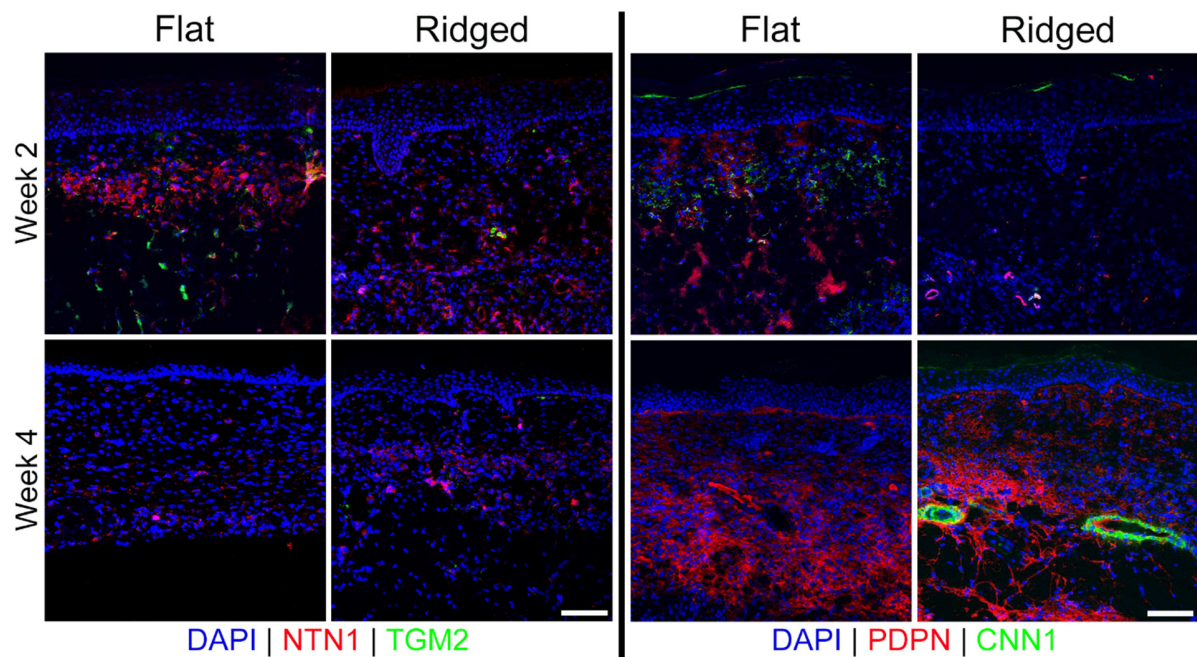


Figure S1: Immunohistochemical localization of papillary (NTN1 and PDPN; red) and reticular (TGM2 and CNN1; green) fibroblast-associated markers in Flat and Ridged grafts at 2 and 4 weeks post-grafting. Nuclei were counterstained using DAPI (blue). Both sets of markers were observed in Flat grafts at week 2, while mainly only papillary-associated markers were found in Ridged grafts at week 2 and both groups at week 4. CNN1 was found in Ridged grafts at week 4, though it was limited to blood vessels. Scale bar = 100 μ m.

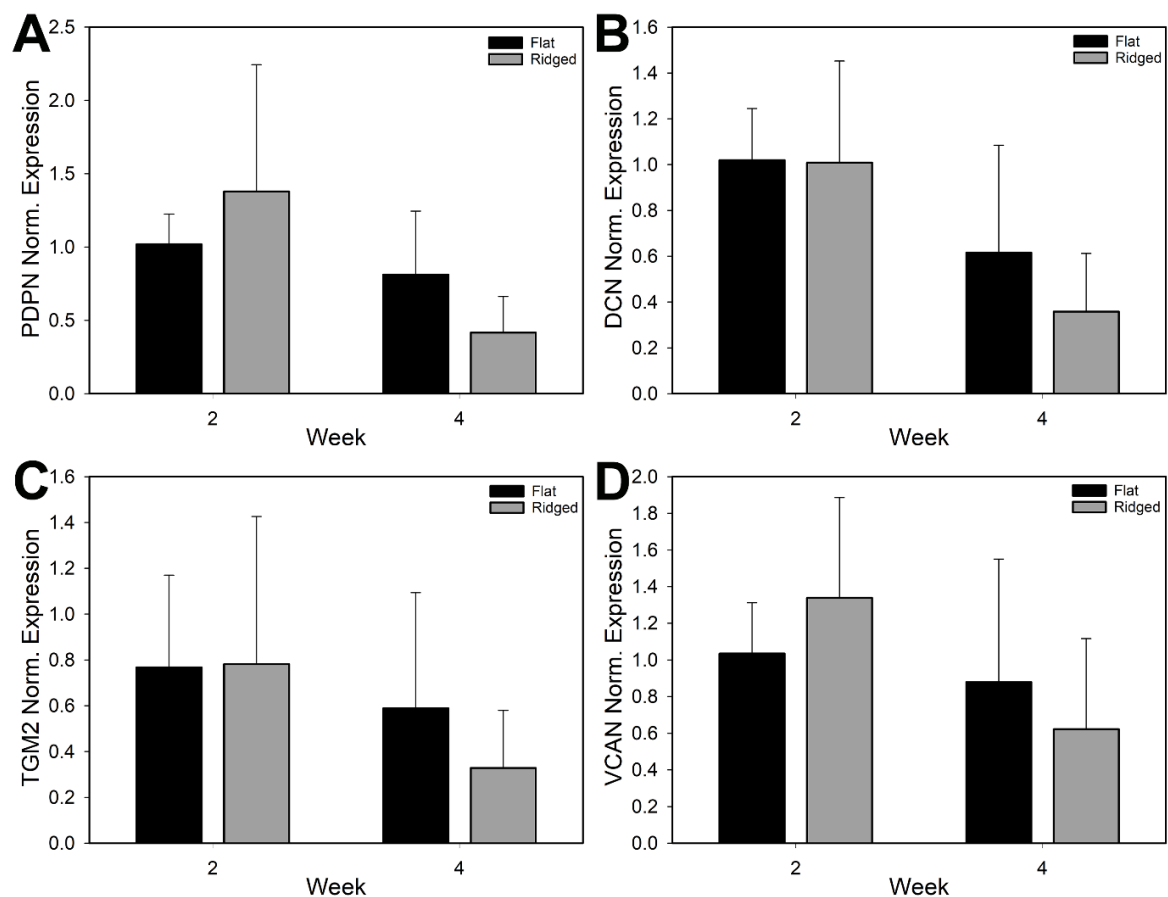


Figure S2: Gene expression analysis for genes associated with papillary dermal fibroblasts (PDPN, A) and ECM (DCN, B) and genes associated with reticular dermal fibroblasts (TGM2, C) and ECM (VCAN, D) in Flat and Ridged grafts at 2 and 4 weeks post-grafting. Expression was referenced to GAPDH presence and normalized to mean expression in Flat grafts at week 2. No statistical differences were determined between the groups at either time point ($p > 0.05$).