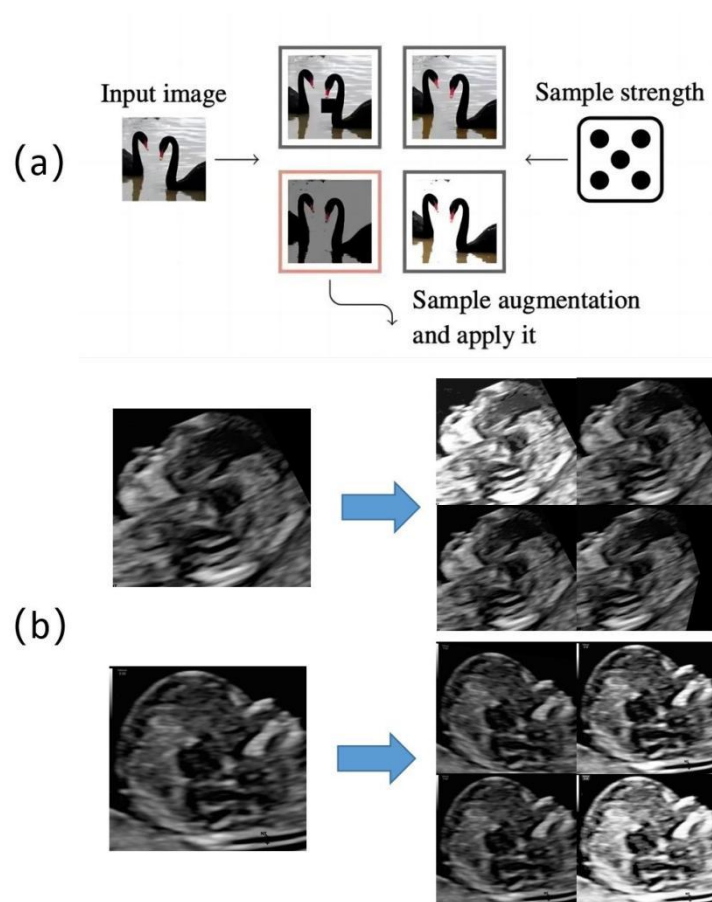


Supplementary Material S1. Example of homomorphic filtering results.

	NA+N B	Max+man d	Chin	Head2	Head1	NT
Model	CNN A			CNN B		
Conv1	7×7			3×3		
Conv2_x	$\begin{bmatrix} 3 \times 3,64 \\ 3 \times 3,64 \\ \text{CBAM} \end{bmatrix} \times 3$			$\begin{bmatrix} 3 \times 3,16 \\ 3 \times 3,16 \\ \text{CBAM} \end{bmatrix} \times 1$		
Conv3_x	$\begin{bmatrix} 3 \times 3,128 \\ 3 \times 3,128 \\ \text{CBAM} \end{bmatrix} \times 3$			$\begin{bmatrix} 3 \times 3,32 \\ 3 \times 3,32 \\ \text{CBAM} \end{bmatrix} \times 1$		
Conv4_x	$\begin{bmatrix} 3 \times 3,256 \\ 3 \times 3,256 \\ \text{CBAM} \end{bmatrix} \times 3$			$\begin{bmatrix} 3 \times 3,64 \\ 3 \times 3,64 \\ \text{CBAM} \end{bmatrix} \times 1$		
Conv5_x	$\begin{bmatrix} 3 \times 3,512 \\ 3 \times 3,512 \\ \text{CBAM} \end{bmatrix} \times 3$					
Average pool						

Supplementary Material S2. The detailed structures of CNN A and CNN B. And the network structure can also be accessed at the following link:
<https://github.com/1057813680/modeling-chart/blob/main/FPMMM-34.png>;
<https://github.com/1057813680/modeling-chart/blob/main/FPMMM-8.png>



Supplementary Material S3. Example of Trivial Augment.