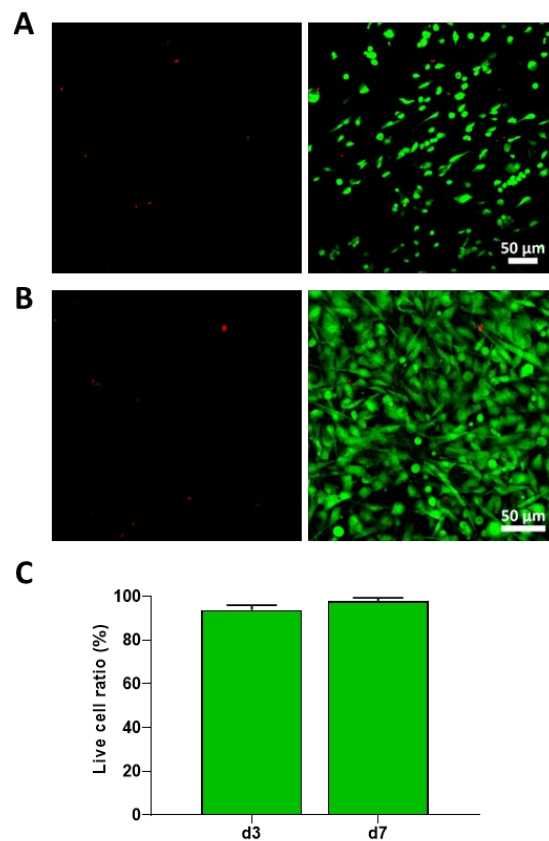
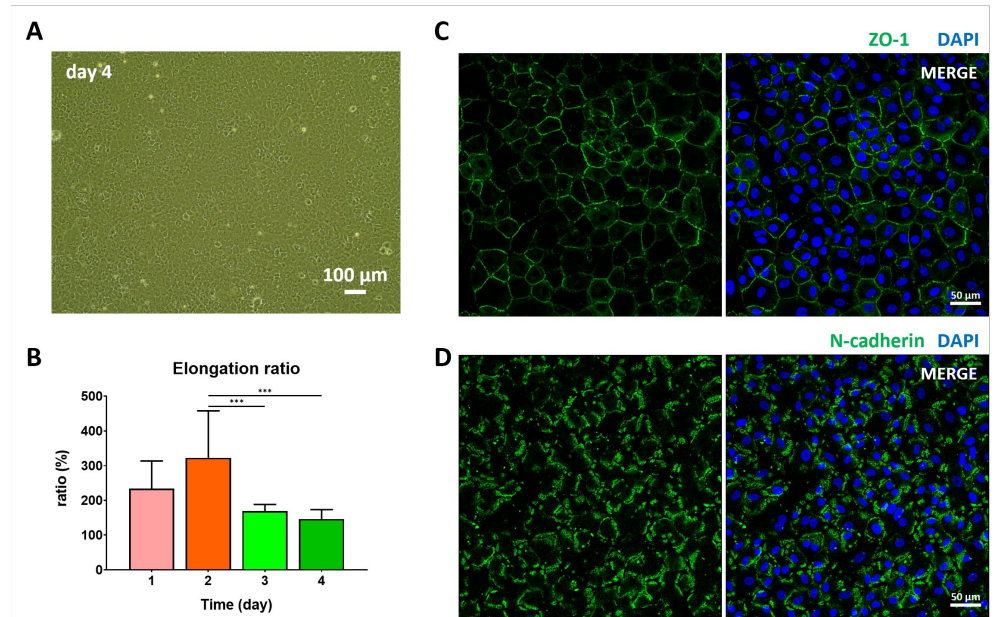


# Electrospun Nanofiber Membrane for Cultured Corneal Endothelial Cell Transplantation

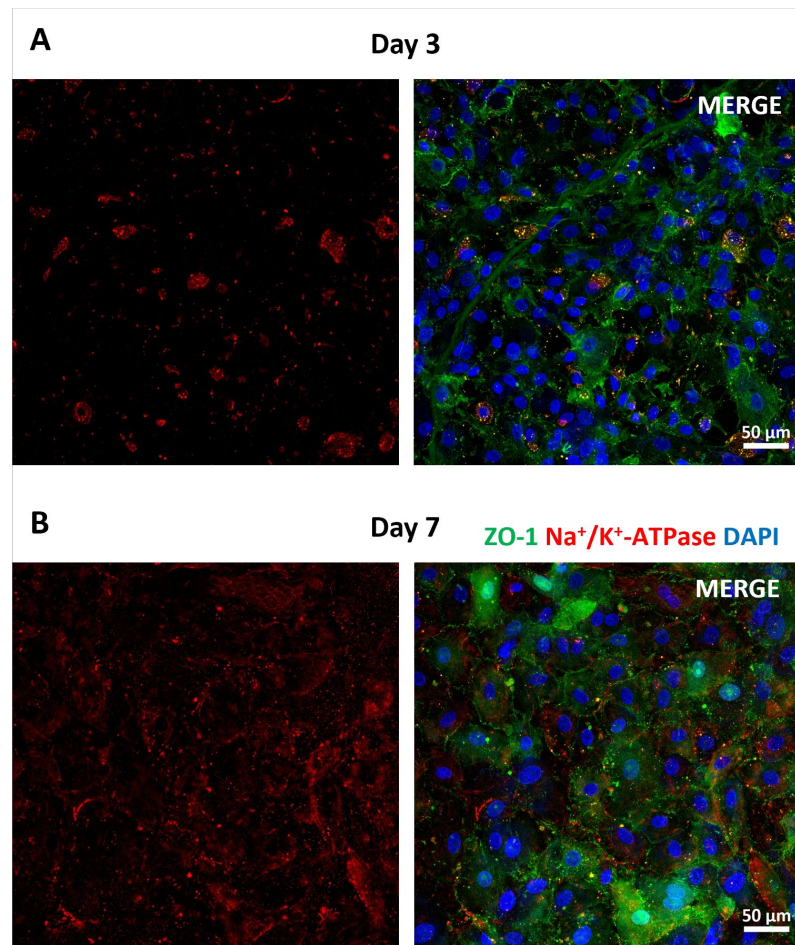
Euisun Song <sup>1,2</sup>, Karen M. Chen <sup>3</sup>, Mathew S. Margolis <sup>1</sup>, Thitima Wungcharoen <sup>1,4</sup>, Won-Gun Koh <sup>3</sup>  
and David Myung <sup>1,2,5,\*</sup>



**Figure S1.** Cytotoxicity of gelNF. Live & Dead assay of the IHECE cultured on top of the gelNF membrane on days (A) 3 and (B) 7. Scale bars: 50 μm. (C) Quantified ratio of the live cell



**Figure S2.** Isolation of primary rabbit corneal endothelial cell and characterization of shape and junctional protein expression. (A) Phase-contrast image of isolated PrCEC cultured on TCP on day 4. Scale bar: 100  $\mu\text{m}$ . (B) Calculation of elongation ratio of PrCECs at different times (day). (C) Immunofluorescence staining of the ZO-1 (green) and nuclei (blue), and (D) N-cadherin (green) and nuclei (blue) on day 3. Scale bars: 50  $\mu\text{m}$ .



**Figure S3.** Functional protein expression of PrCECs cultured on top of the gelNF membrane. Immunofluorescence staining of the Na<sup>+</sup>/K<sup>+</sup>-ATPase (red), ZO-1 (green), and nuclei (DAPI) on (A) days 3 and (B) 7. Scale bars: 50 μm.