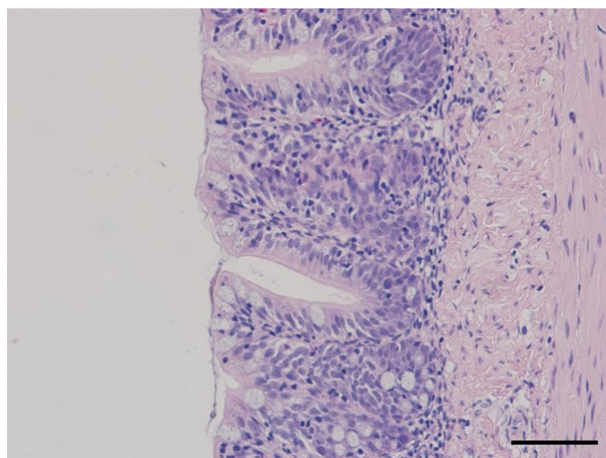
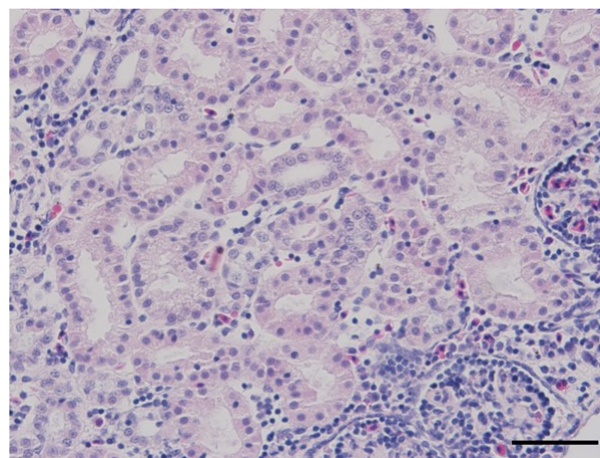


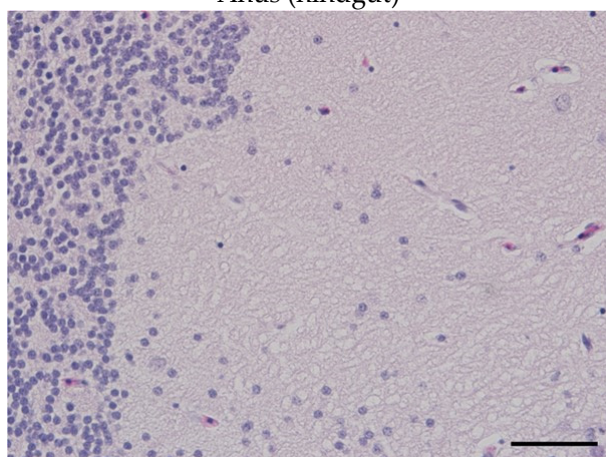
Supplementary Materials: Figure S1: Histological results of other organs.



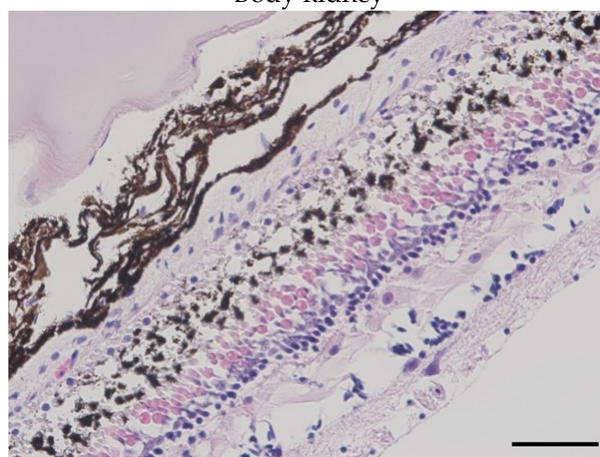
Anus (hindgut)



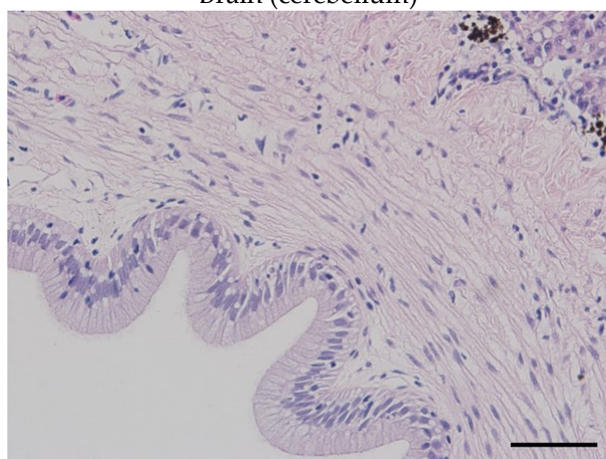
Body kidney



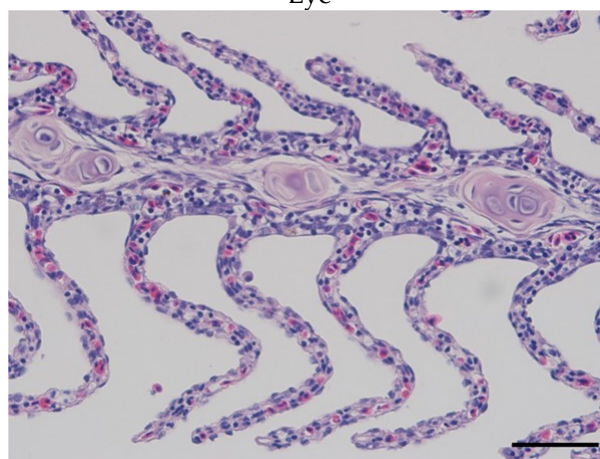
Brain (cerebellum)



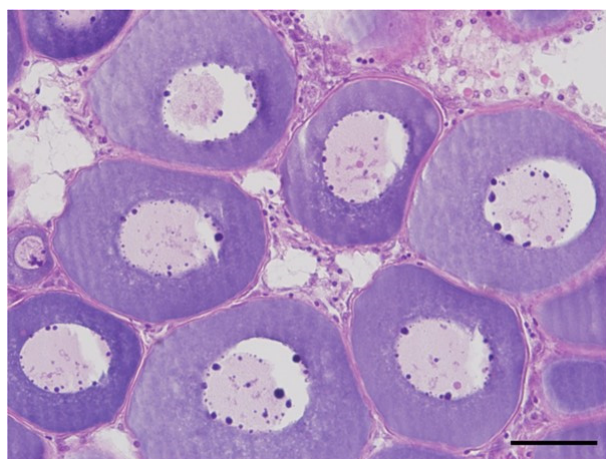
Eye



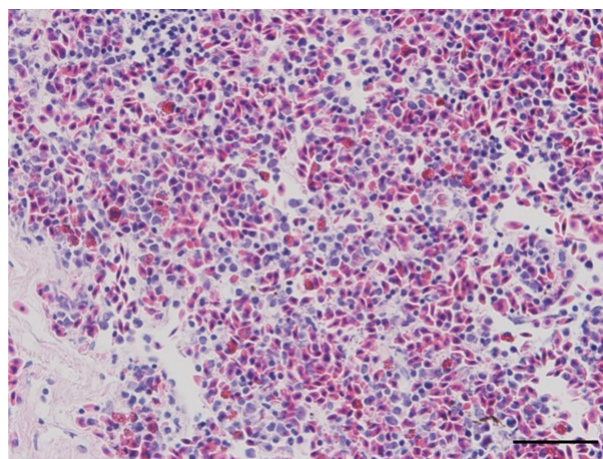
Gall bladder



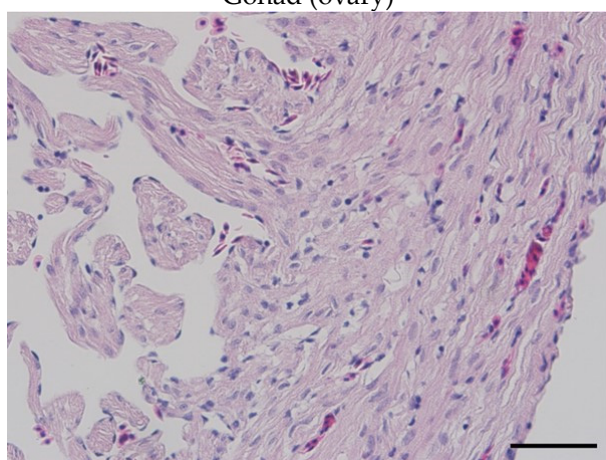
Gill



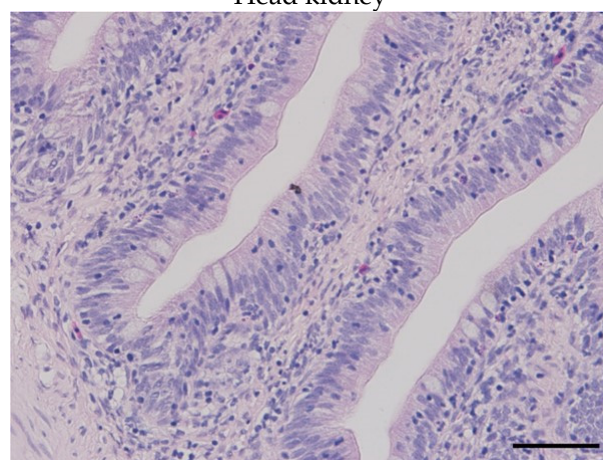
Gonad (ovary)



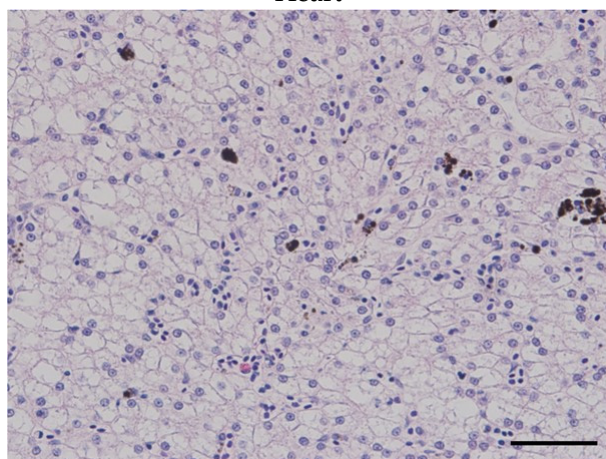
Head kidney



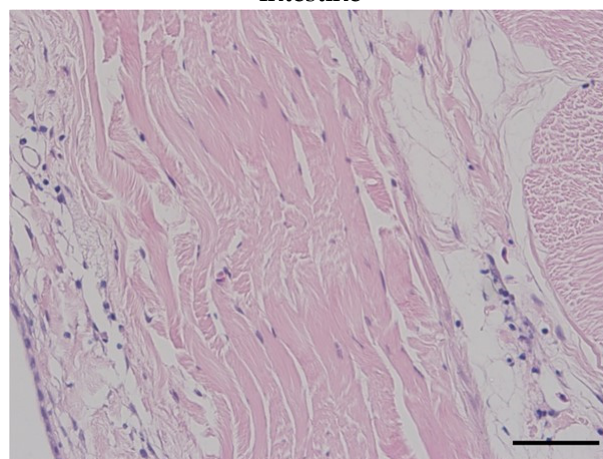
Heart



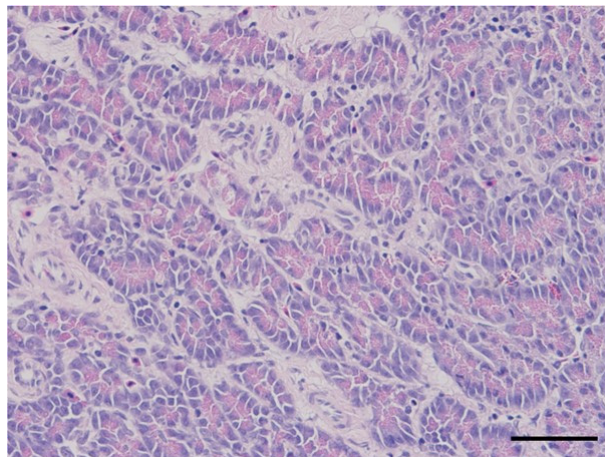
Intestine



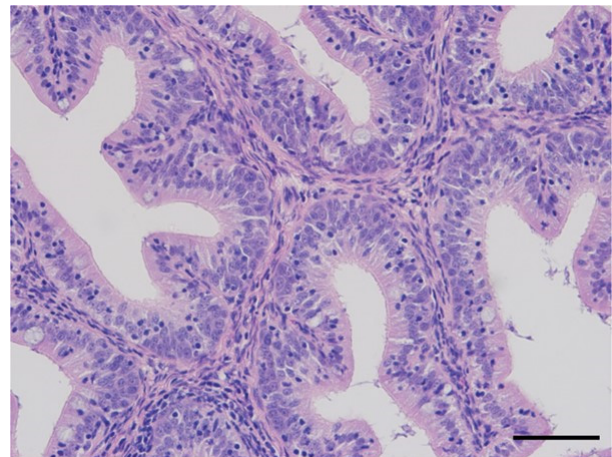
Liver



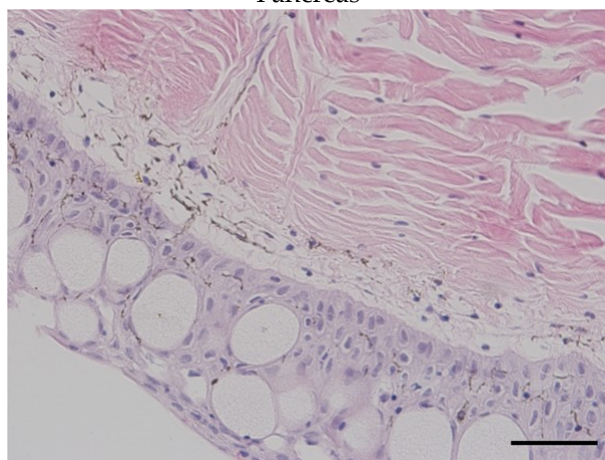
Muscle



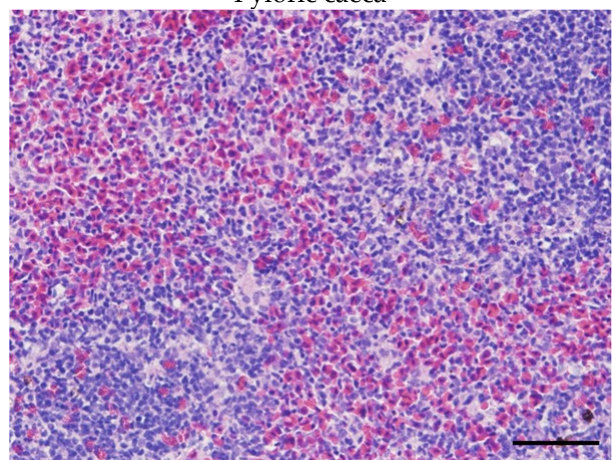
Pancreas



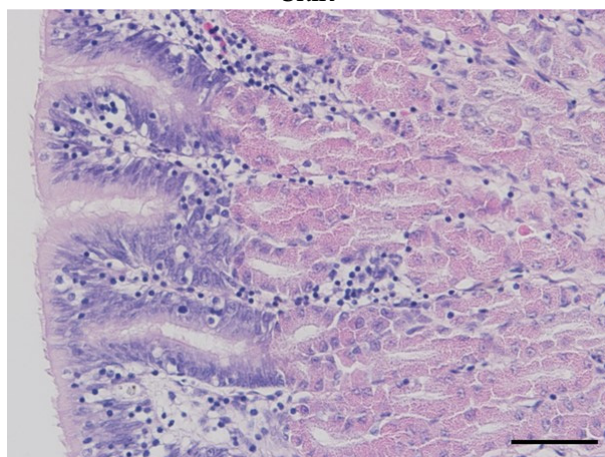
Pyloric caeca



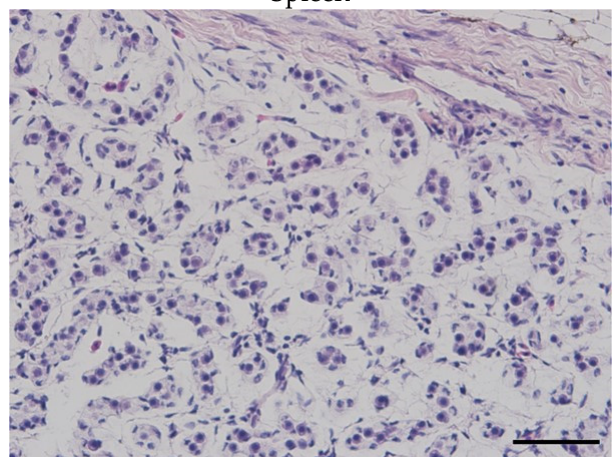
Skin



Spleen



Stomach



Swim bladder

Figure S1. Other organs: anus (hindgut), body kidney, brain, eye, gall bladder, gill, gonad, head kidney, heart, intestine, liver, muscle, pancreas, pyloric caeca, skin, spleen, stomach, and swim bladder (Scale bar = 50 μ m).