

Figure S1. Effect of imipramine (5 mg/kg every day) on (a) body weight and (b) weekly body weight gain in HFD-fed controls and HFD-fed mice treated with imipramine during the 56-day experimental period. No significant differences in body weight and weekly body weight gain were observed between the two groups.

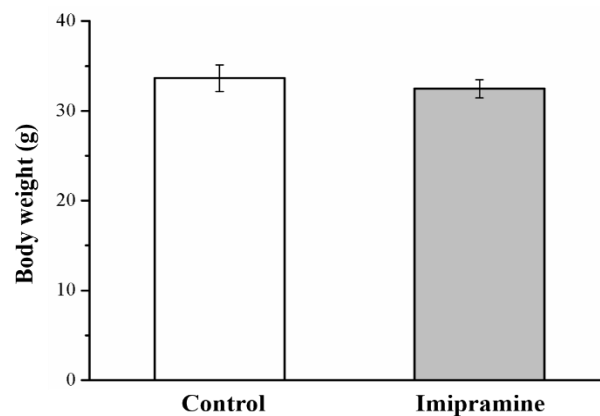


Figure S2. Effect of imipramine (10 mg/kg every day) on body weight in SD-fed controls and SD-fed mice treated with imipramine during the 56-day experimental period. No significant differences in body weight were observed between the two groups.

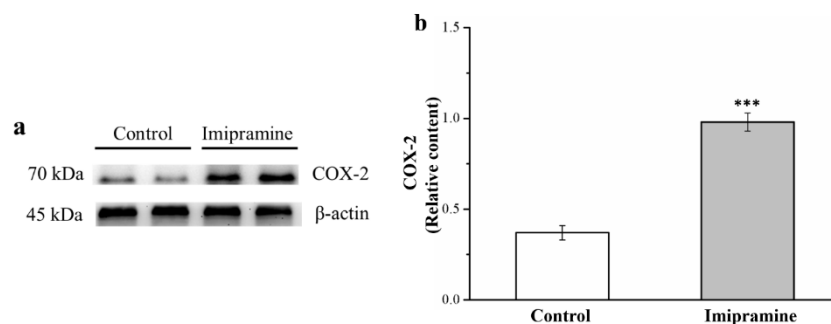


Figure S3. Effects of imipramine (10 mg/kg every day) on (a) a representative image showing blots of liver extracts. The expression level of (b) COX-2 was measured. Data are in the form of mean \pm standard deviation ($n = 8$). *** $p < 0.001$.

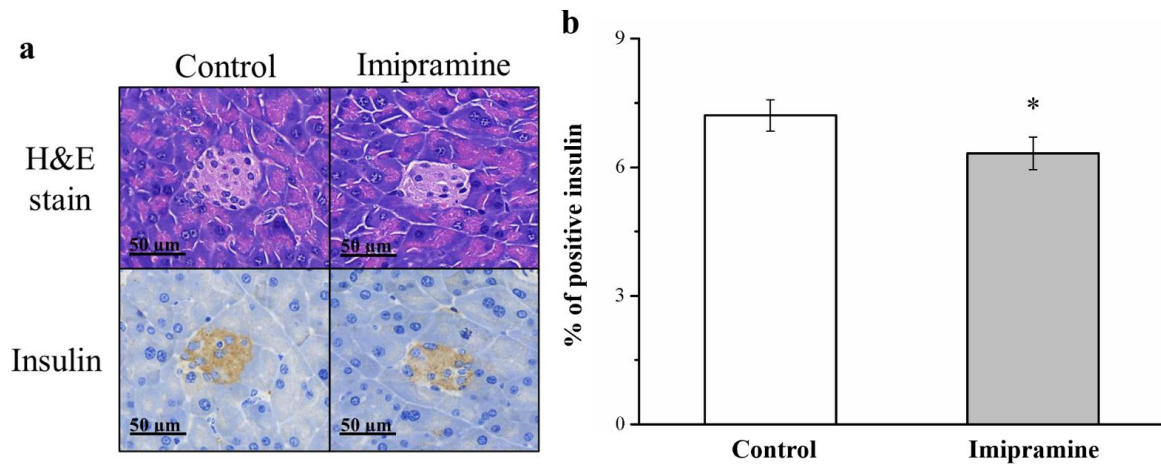


Figure S4. Alterations in (a) islet morphologies (hematoxylin and eosin as well as immunohistochemical stain; 200× magnification) and (b) β -cell percentage in control and treatment groups. * $p < 0.05$.

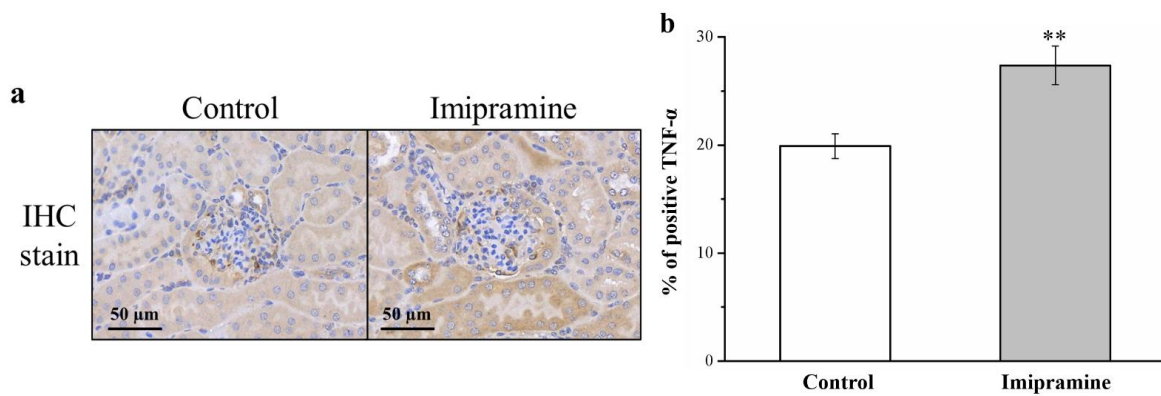


Figure S5. Alterations in (a) IHC stains (magnification: 200×) and (b) renal levels of TNF- α in treatment and control groups. ** $p < 0.01$.

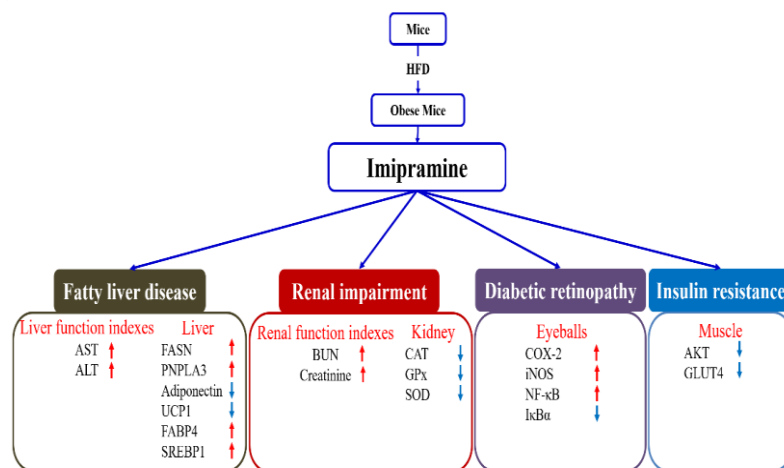


Figure S6. Mechanistic presentation of side effects experienced by HFD-induced obese mice treated with imipramine for 56 days.