

Self-Assembled Peptide Habitats to Model Tumor Metastasis

Noora Al Balushi ¹, Mitchell Boyd-Moss ^{2,3,4}, Rasika M. Samarasinghe ^{3,5}, Aaqil Rifai ^{2,3,5}, Stephanie J. Franks ⁶, Kate Firipis ^{2,4}, Benjamin M. Long ⁷, Ian A. Darby ¹, David R. Nisbet ^{6,8,9,10}, Dodie Pouniotis ^{1,*} and Richard J. Williams ^{2,3,4,5,*}

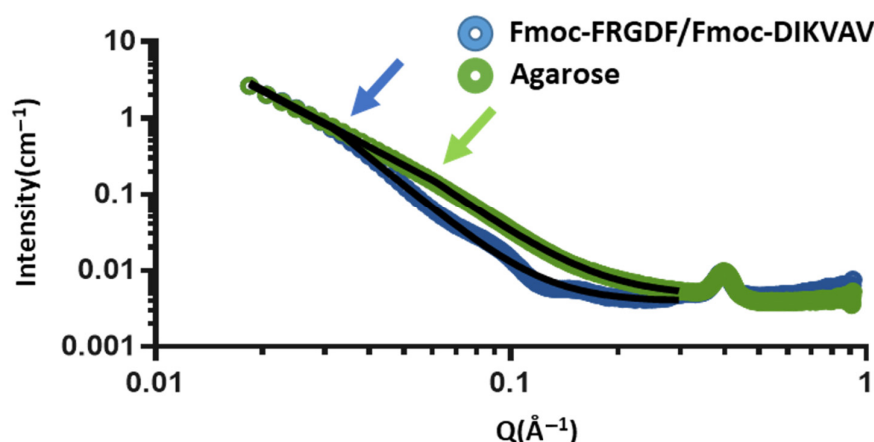


Figure S1. Fitting of scattering curves using a two-power model to determine mesh size (arrows indicate the power intercept).

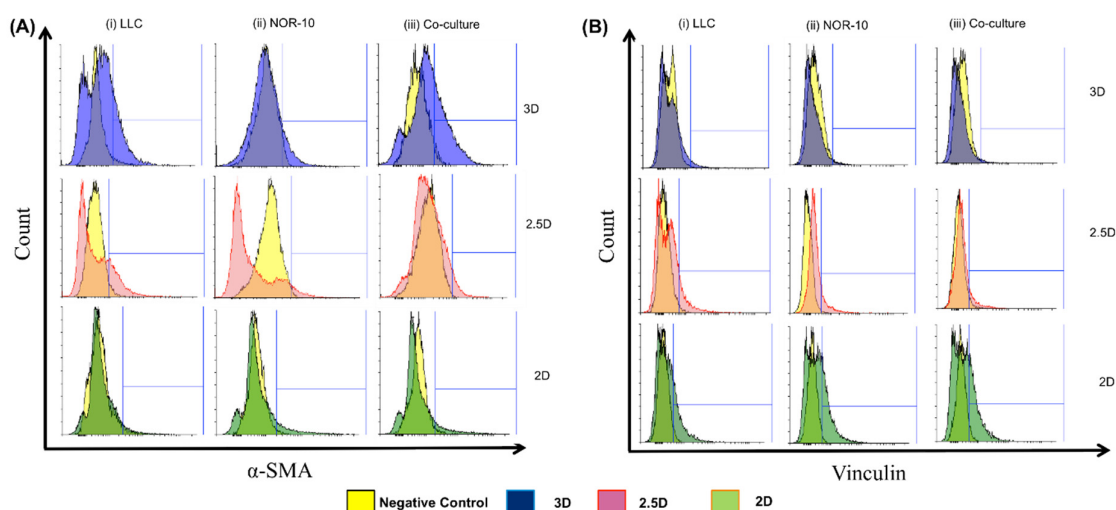


Figure S2. Flow cytometry of (A) α -SMA and (B) vinculin expression measured in (i) LLC, (ii) NOR-10 and (iii) LLC+NOR-10 co-culture after 72 hours encapsulation within Fmoc-SAP hydrogel (3D) compared to 2.5D spheroids in media and 2D cell culture.

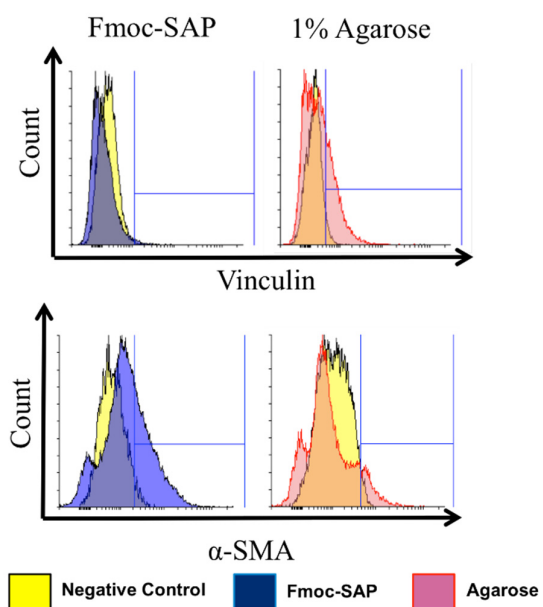


Figure S3. Flow cytometry analysis of vinculin and α -SMA expression in co-culture spheroids within Fmoc-SAP hydrogels and 1% agarose.