

Figure S1. Methane production in anaerobic digestion with $\text{NH}_4\text{-N}$ (0, 1, 2, 3, and 5 g/L) by sludge A, B, and C used for acclimation.

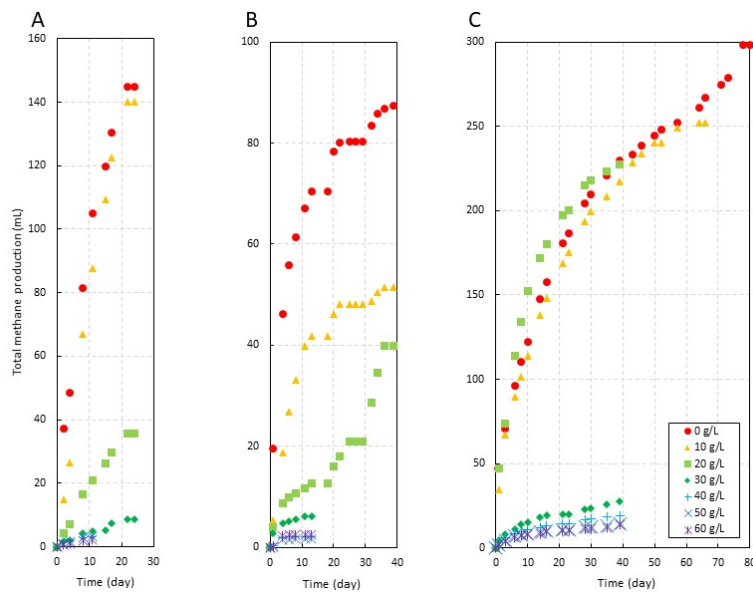


Figure S2. Methane production in anaerobic digestion with sodium chloride (0, 10, 20, 30, 40, 50, and 60 g/L) by sludge A, B, and C used for acclimation.