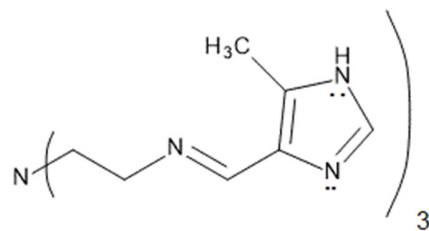
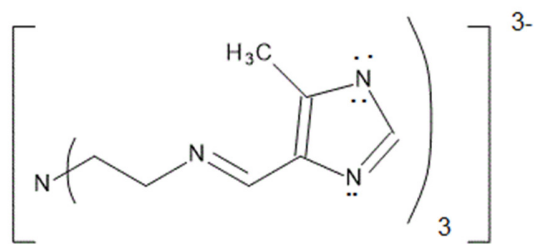


Supplementary Materials: Structural Evidence of Spin State Selection and Spin Crossover Behavior of Tripodal Schiff Base Complexes of tris(2-aminoethyl)amine and Related Tripodal Amines

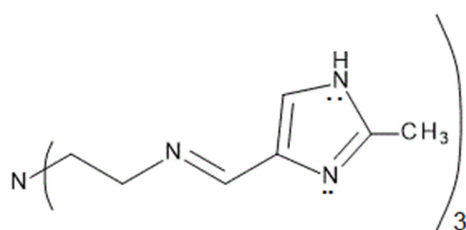
Greg Brewer



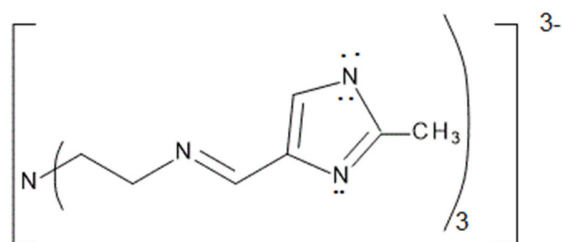
tren(5Me-4ImH)₃



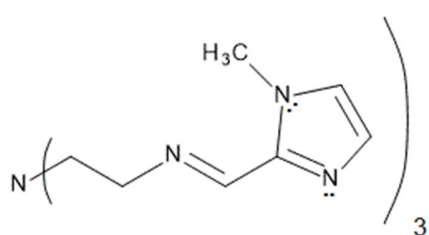
[tren(5Me-4Im)₃]³⁻



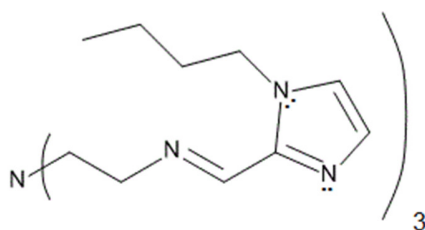
tren(2Me-4ImH)₃



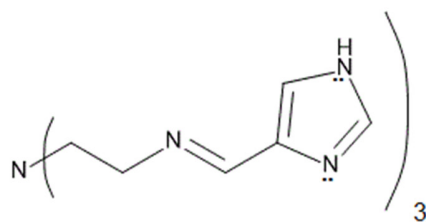
[tren(2Me-4Im)₃]³⁻



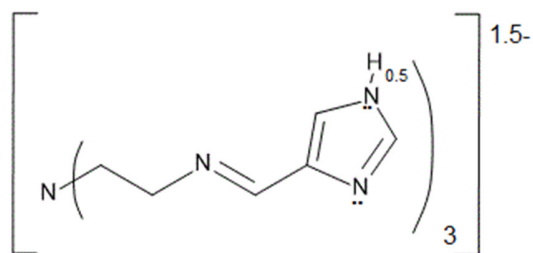
tren(1Me-2Im)₃



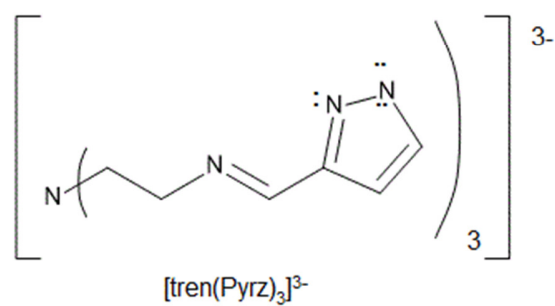
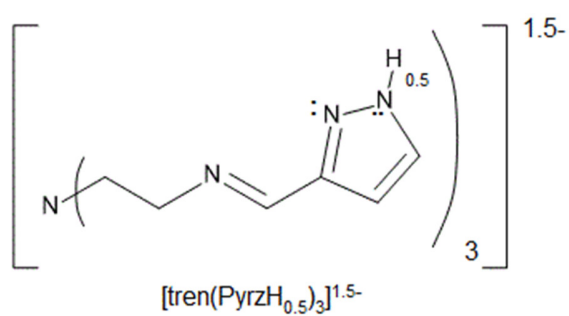
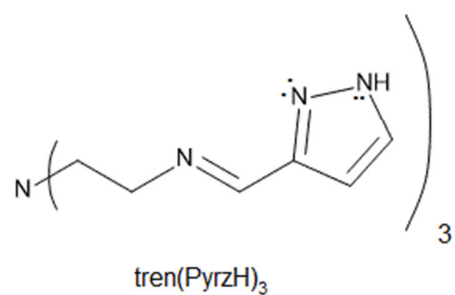
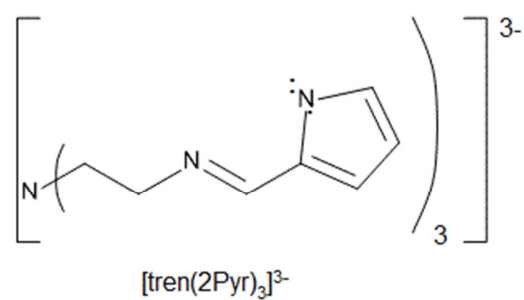
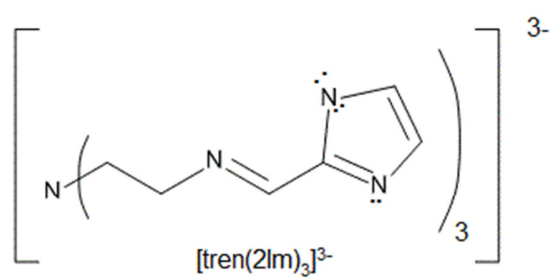
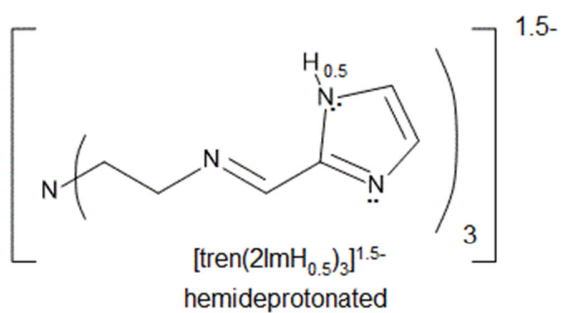
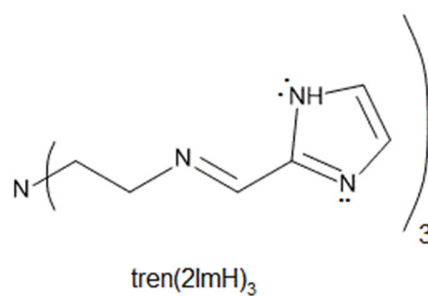
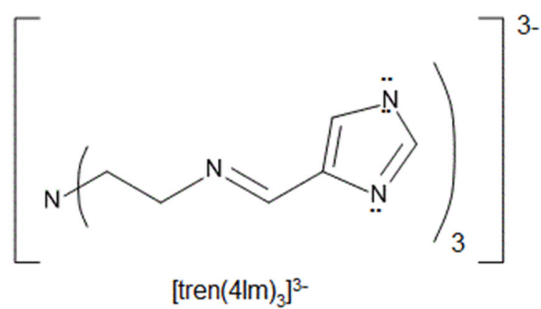
tren(1Bu-2Im)₃



tren(4ImH)₃



[tren(4ImH_{0.5})₃]^{1.5-}
hemideprotonated



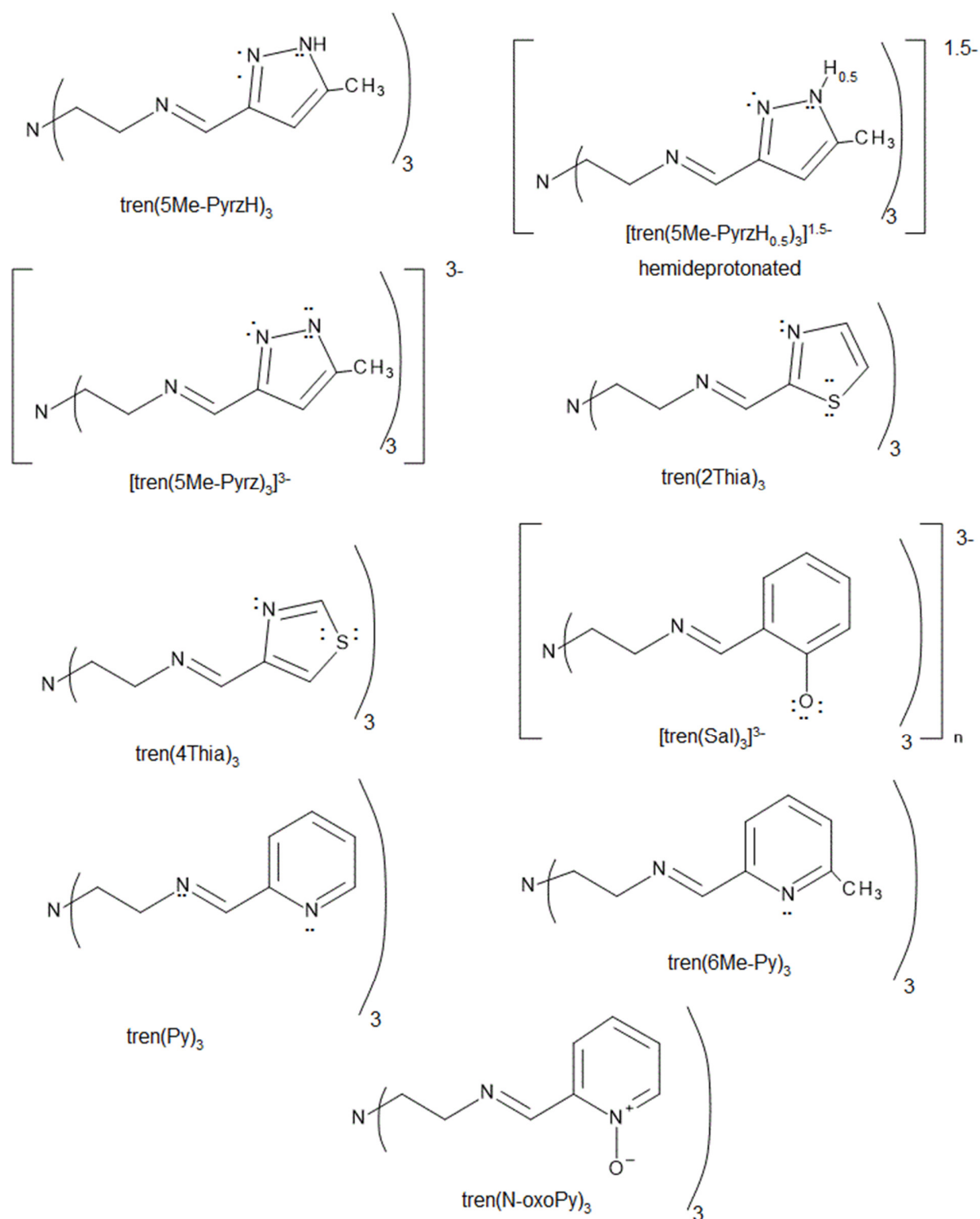


Figure S1. Line drawings of ligands used.