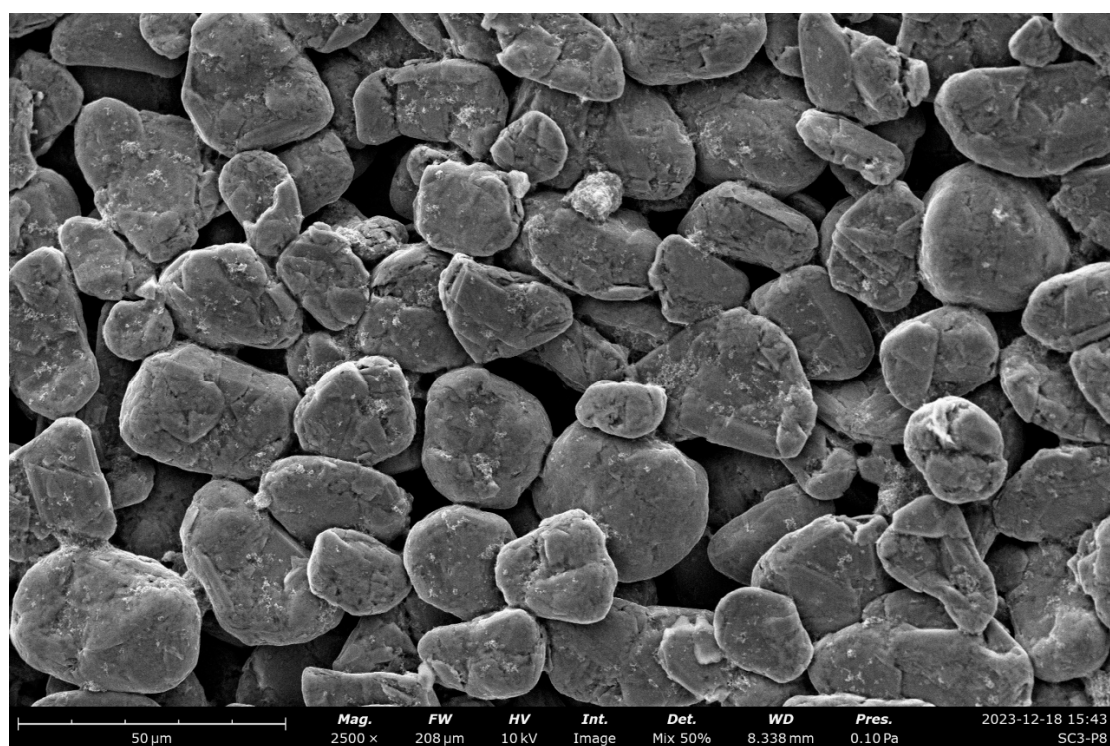


(a) Graphite anode slurry produced at 120 rpm and 0.4 kgh^{-1}



(b) Graphite anode slurry produced at 900 rpm and 0.4 kgh^{-1}

Figure S1: SEM image of the produced anode slurries at 120 RPM (a) and 900 RPM (b).

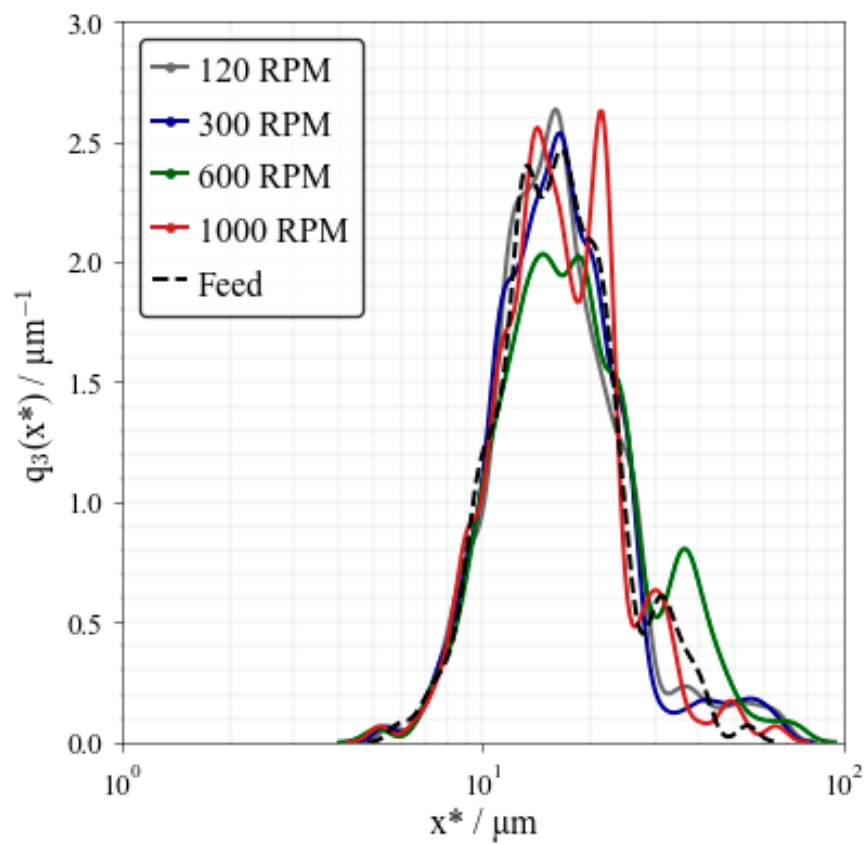


Figure S2: Particle size distributions of graphite after extrusion at different screw speeds, compared to the initial distribution (Feed).