

In-Situ Alloy-modified Sodiophilic Current Collectors for Anode-Less Sodium Metal Batteries

**Xiaolong Cheng^{1, #}, Dongjun Li^{2, #}, Shen Peng¹, Pengcheng Shi¹, Huili Yu¹, Yu Jiang^{1, *}
and Shikuo Li^{1, *}**

¹ School of Material Science and Engineering, Anhui University, Hefei 230601, China.

² Hefei National Laboratory for Physical Sciences at the Microscale, Department of Materials Science and Engineering, CAS Key Laboratory of Materials for Energy Conversion, University of Science and Technology of China, Hefei 230026, China.

^{*} Correspondence: jiangyu21@ahu.edu.cn (Y. J.); lishikuo@ahu.edu.cn (S. L.)

[#] These authors contributed equally to this work.

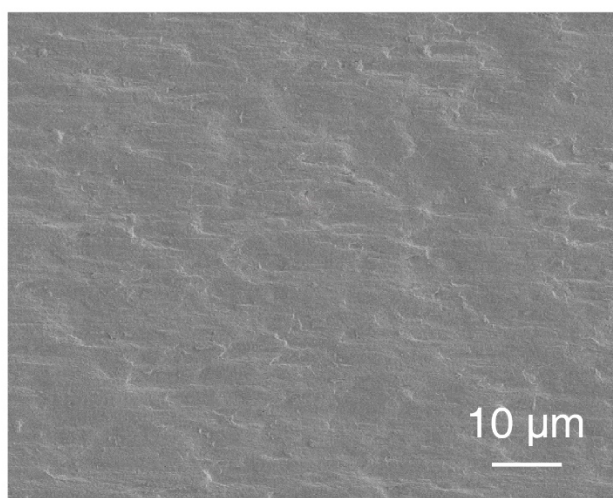


Figure S1. The SEM image of the Bare Cu.

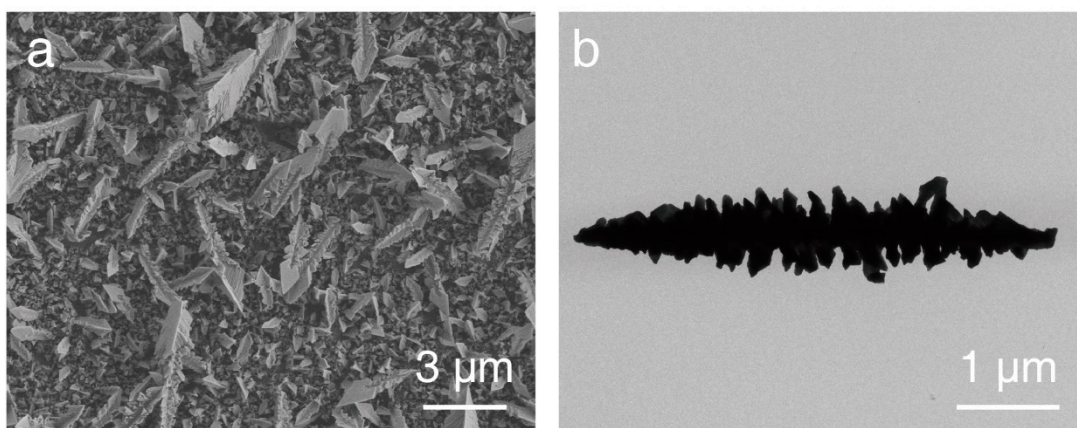


Figure S2. (a) The SEM image of the Cu@Bi. (b) The TEM image of the dendrite Bi.

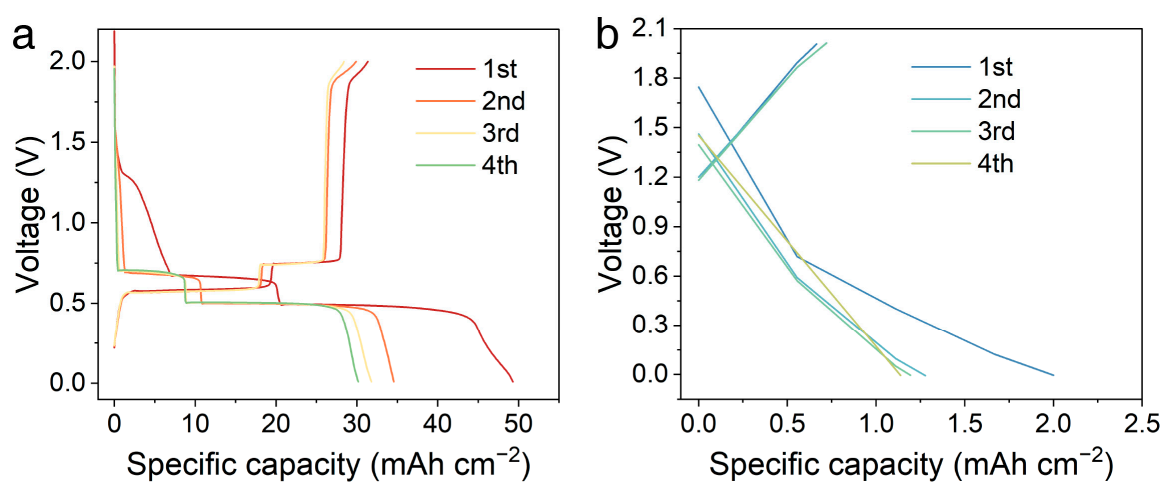


Figure S3. The activation process of (a) the Cu@Bi and (b) the Bare Cu.

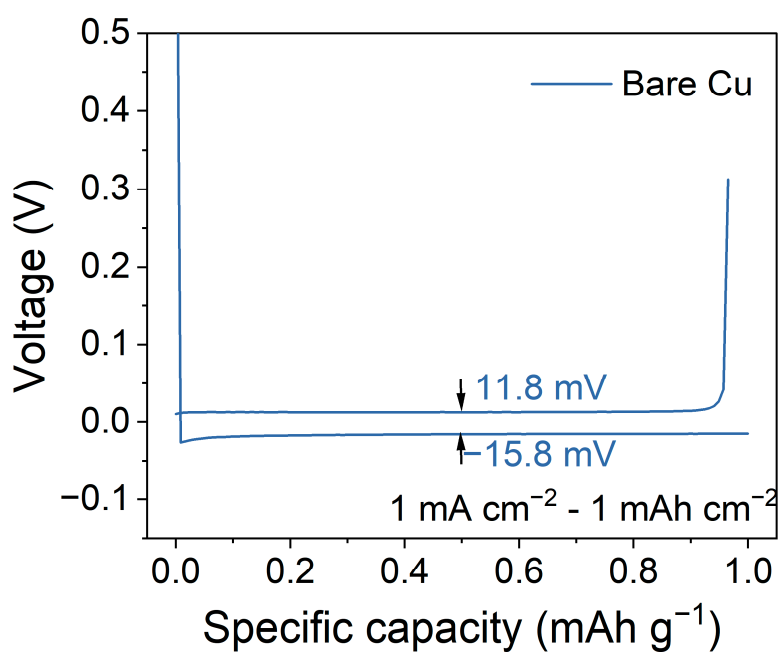


Figure S4. The voltage profile of the Bare Cu||Na at 1 mA cm^{-2} and 1 mAh cm^{-2} .

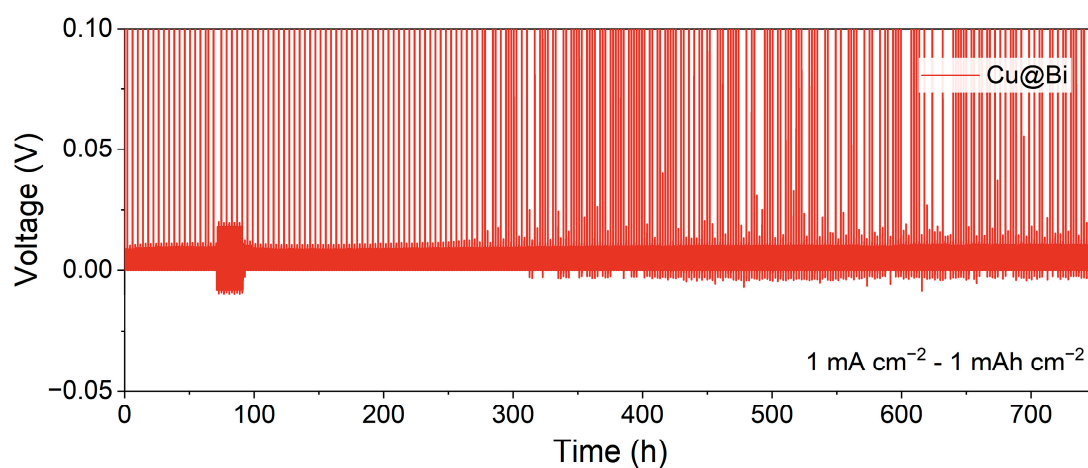


Figure S5. The voltage-time curves of the Cu@Bi||Na at 1 mA cm^{-2} and 1 mAh cm^{-2} .

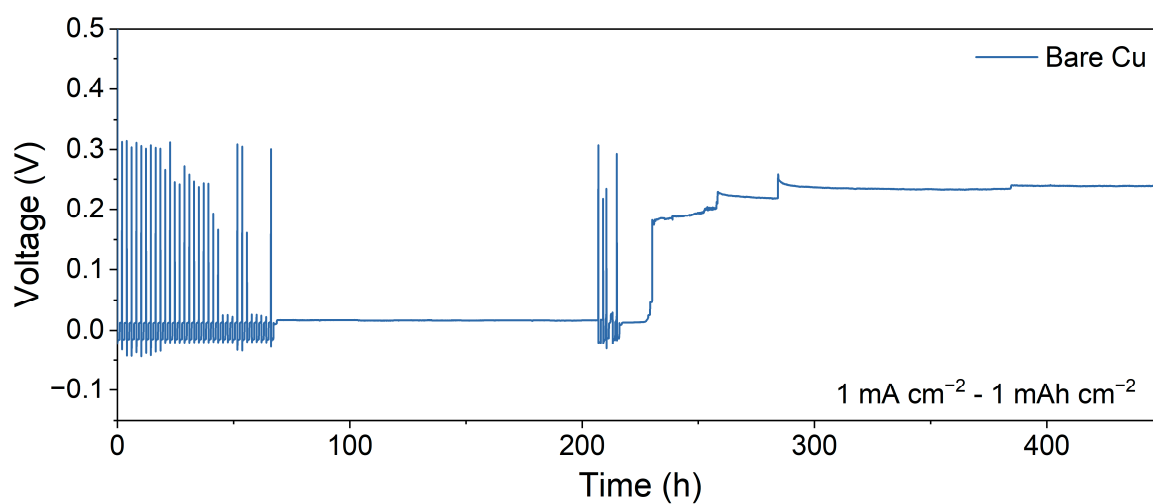


Figure S6. The voltage-time curves of the Bare Cu||Na at 1 mA cm^{-2} and 1 mAh cm^{-2} .

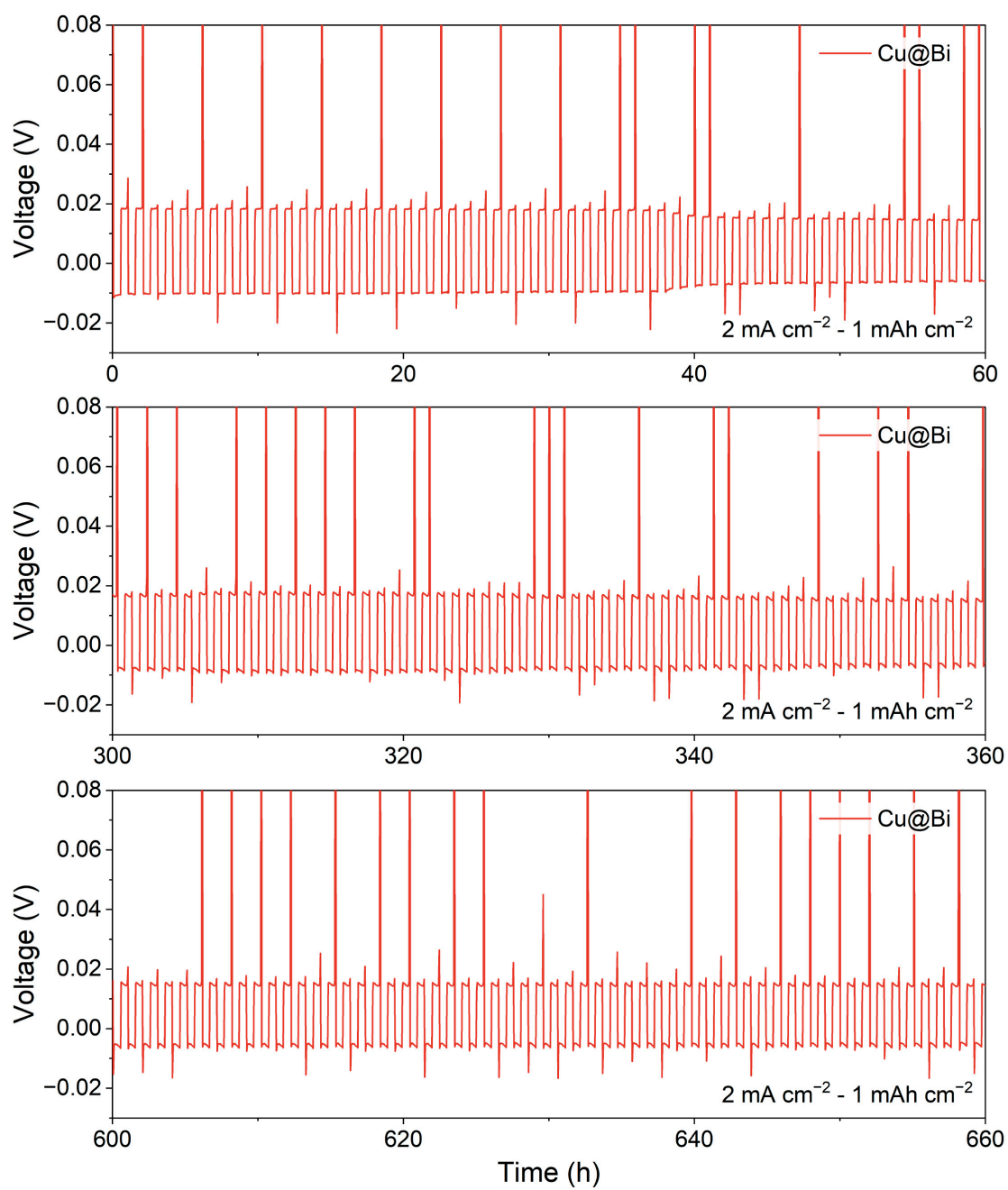


Figure S7. The enlarged voltage-time curves of the Cu@Bi||Na at 2 mA cm⁻² and 1 mAh cm⁻².

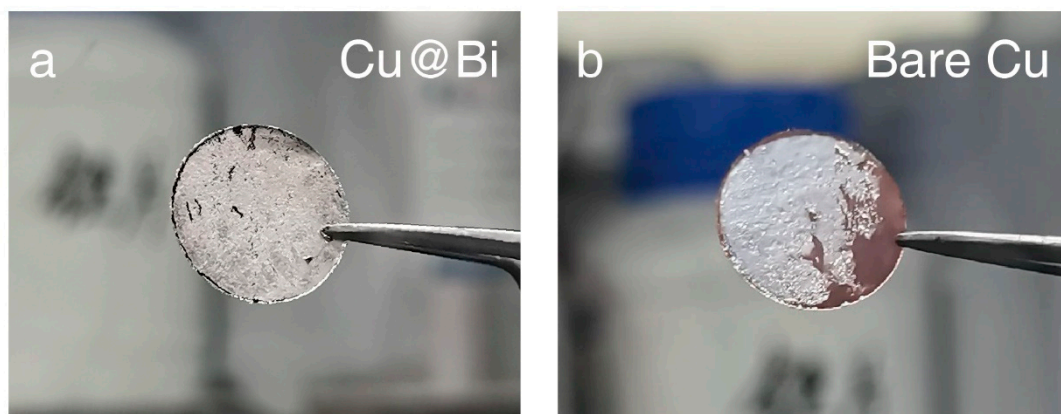


Figure S8. The optical image of 1 mAh cm^{-2} Na metal plated on (a) the Cu@Bi and (b) the Bare Cu.

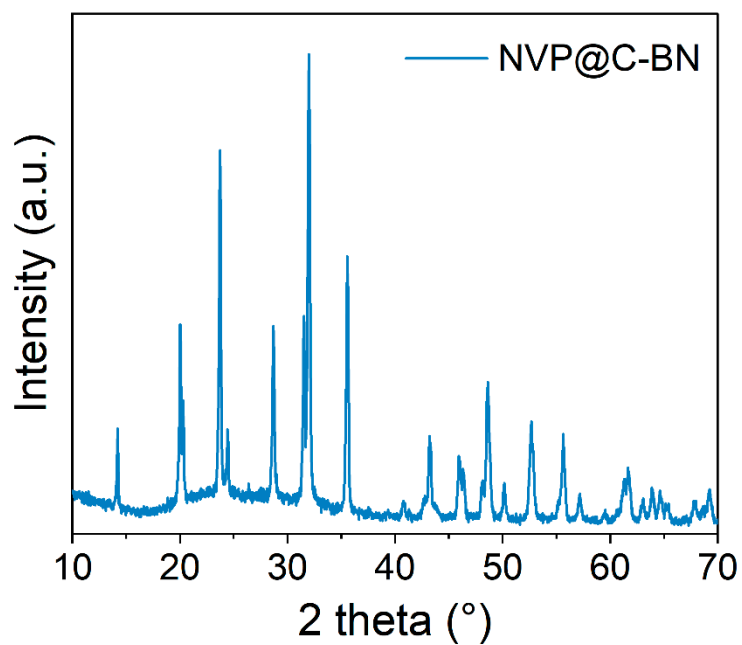


Figure S9. The XRD pattern of the NVP@C-BN.

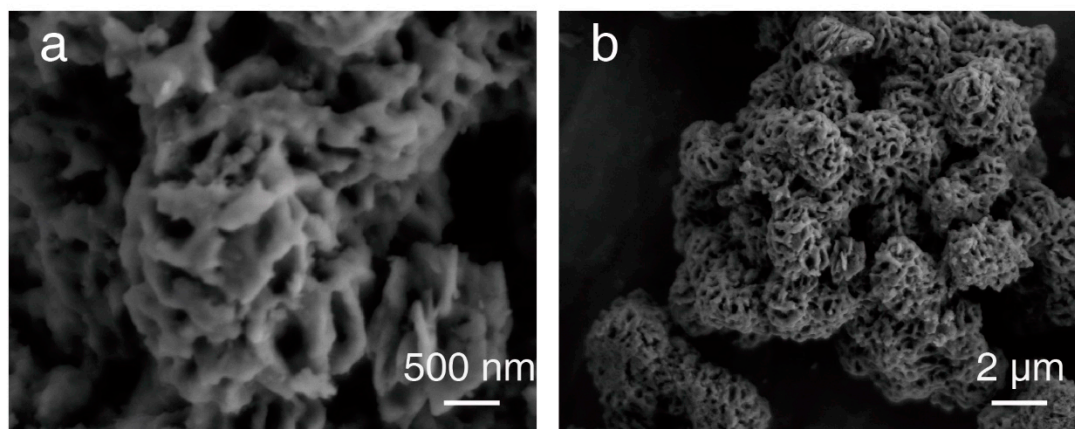


Figure S10. The SEM images of the NVP@C-BN.

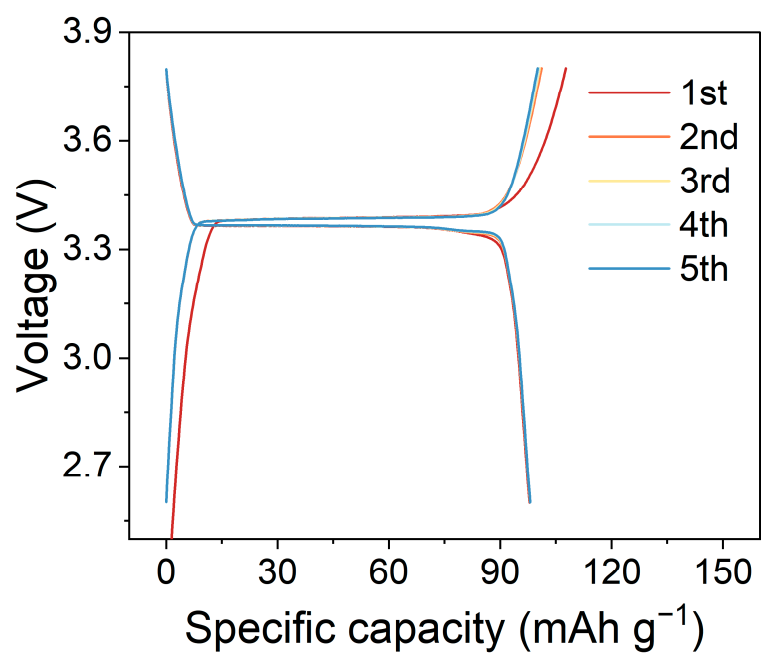


Figure S11. The voltage profiles of the NVP@C-BN when cycling at 1C.

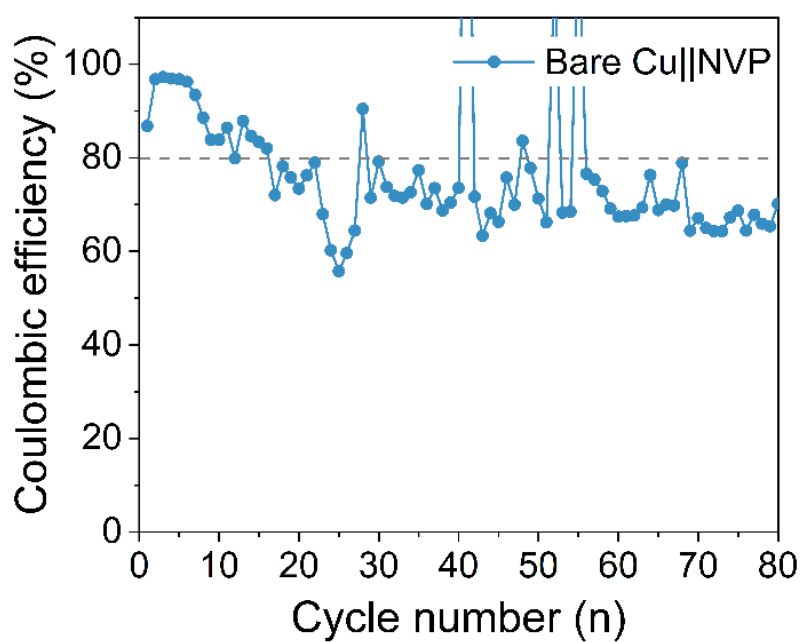


Figure S12. The coulombic efficiency of the Bare Cu||NVP at 1C.