

Supplementary Materials

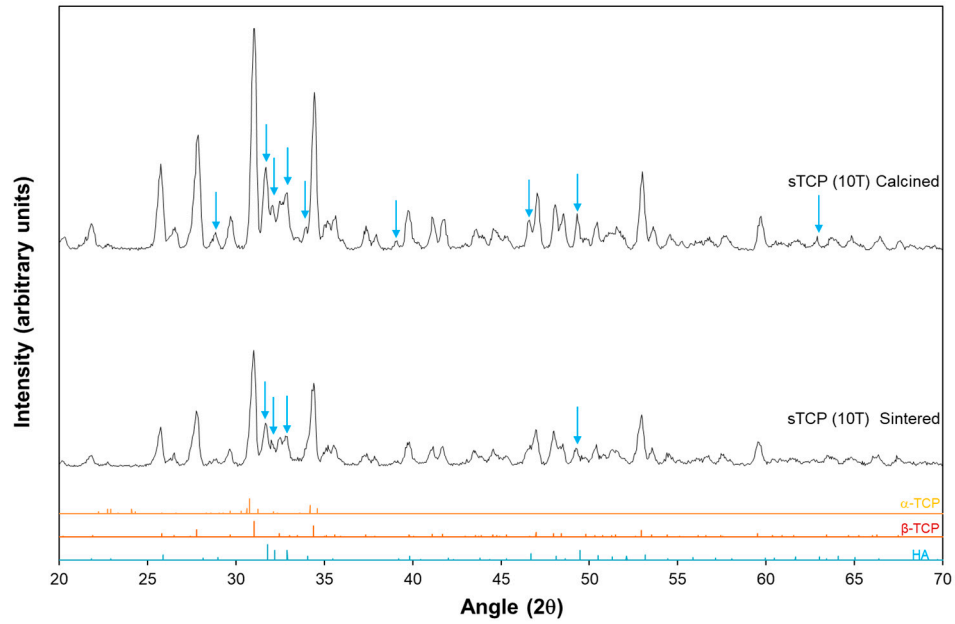


Figure S1. X-ray diffraction spectra of the biocomposites 10T (sTCP) after calcination and after sintering and X-ray diffraction spectra of the theoretical cards #09-0432, #09-0169, and #09-0348, corresponding to HA, β -TCP, and α -TCP, respectively.

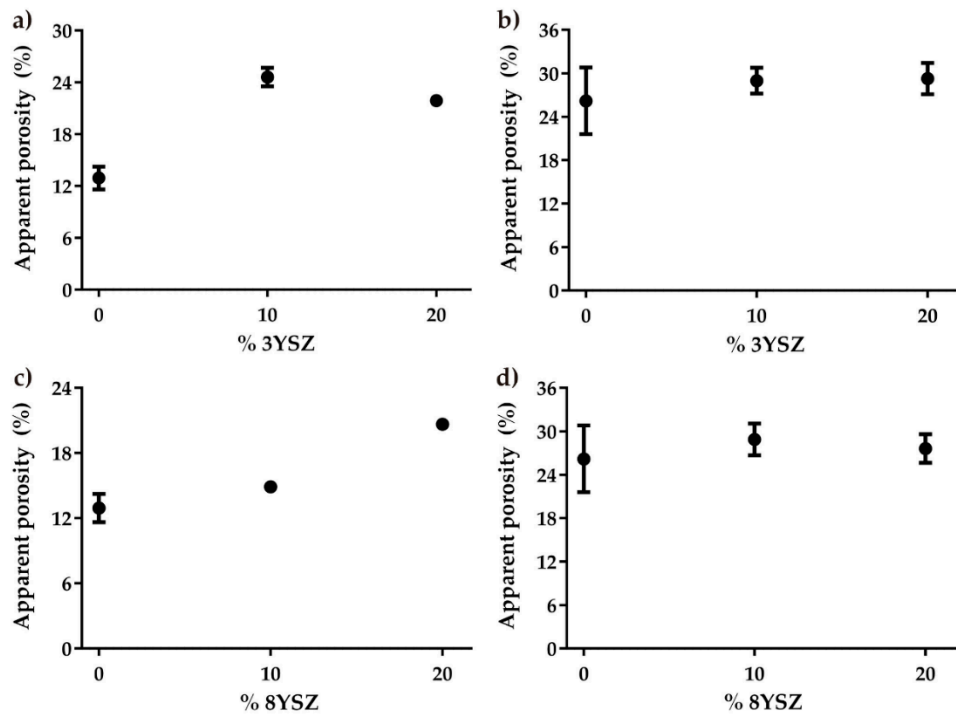


Figure S2. Apparent porosity of the composites: a) dense reinforced with 3YSZ; b) manufactured with PMMA and reinforced with 3YSZ; c) dense reinforced with 8YSZ; d) manufactured with PMMA and reinforced with 8YSZ.

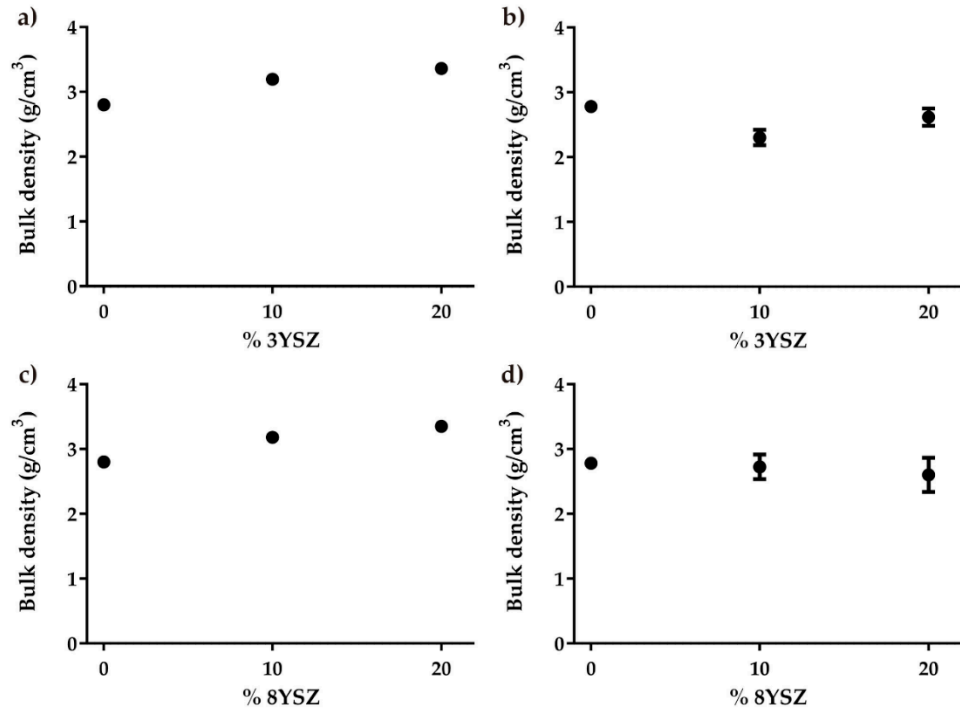


Figure S3. Bulk density of the composites: a) dense reinforced with 3YSZ; b) manufactured with PMMA and reinforced with 3YSZ; c) dense reinforced with 8YSZ; d) manufactured with PMMA and reinforced with 8YSZ.

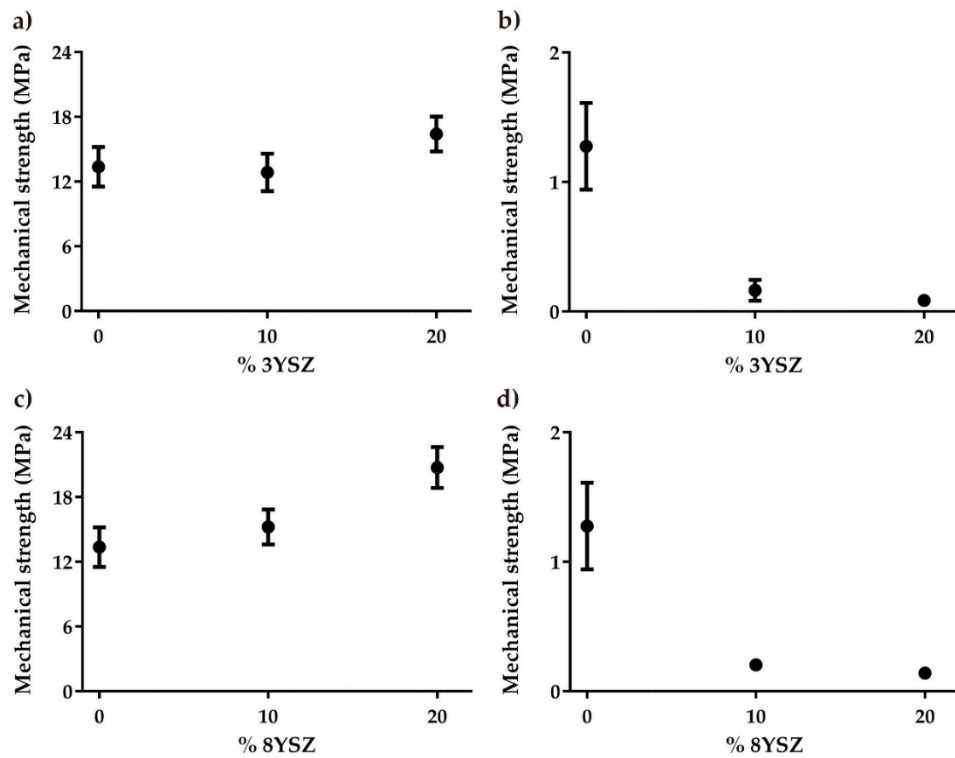


Figure S4. Mechanical strength of the composites: a) dense reinforced with 3YSZ; b) manufactured with PMMA and reinforced with 3YSZ; c) dense reinforced with 8YSZ; d) manufactured with PMMA and reinforced with 8YSZ.