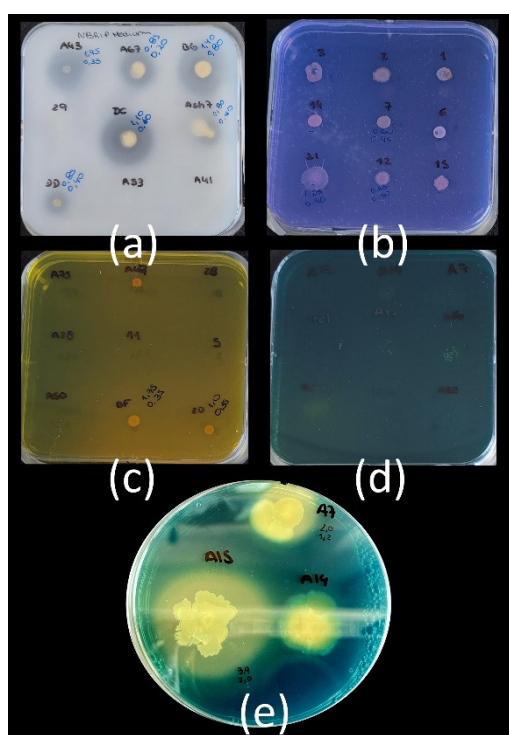


### Supplementary figures: Legends



**SFig 1. Petri dish-based screening methods.** The images show a representative plate from the test performed in plate for qualitative assessment of the performance of the isolated strains in phosphate solubilization (a), where discoloration halos indicate a positive strain; in sulfur oxidation (b), where discoloration halos indicate a positive strain; in potassium solubilization (c), where yellow halo indicate a positive strain; in nitrogen fixation (d), where yellowish halos indicate a positive strain; and in siderophore production (e), where again a yellow halo indicate a positive strain. Each strain was tested in triplicate and the halos size was measured in order to compare the relative activity for each trait.