

an Open Access Journal by MDPI

## Systemic Immune-Inflammation Index in Endocrine and Metabolic Disorders

Guest Editor:

**Prof. Dr. Otilia Marginean**

First Pediatric Clinic, University of Medicine and Pharmacy “Victor Babes”, Timisoara, Romania

Deadline for manuscript submissions:

**closed (20 May 2024)**

### Message from the Guest Editor

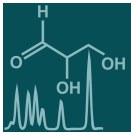
Endocrine and metabolic diseases are a global health concern, primarily due to the escalating prevalence of childhood obesity, which often leads to long-term health outcomes. In the dynamic landscape of medical research, understanding the intricate relationship between endocrine/metabolic disorders, the immune system, and inflammation is crucial. Apart from conventional biomarkers, hematologic indices are gaining attention in numerous chronic diseases as a means to quantify inflammation. The systemic immune-inflammation index incorporates key hematological parameters, providing a holistic understanding of the body's immune and inflammatory status. This Special Issue provides a unique platform for authors to explore the relationship between the systemic immune-inflammation index and pediatric endocrine and metabolic diseases.

Join us in this vital dialogue by submitting your articles, and be part of the solution addressing the challenges posed by disorders such as childhood diabetes, obesity, and thyroid dysfunction. Together, we can pave the way towards a healthier future for younger generations.



[mdpi.com/si/185432](https://mdpi.com/si/185432)

# Special Issue



an Open Access Journal by MDPI

## Editor-in-Chief

### Dr. Amedeo Lonardo

1. Formerly Director of the Simple Operating Unit "Metabolic Syndrome", Azienda Ospedaliero-Universitaria, 41126 Modena, Italy  
2. Formerly Professor of Internal Medicine, School of Specialization of Allergology and Clinical Immunology, University of Modena and Reggio Emilia, 41121 Modena, Italy

## Message from the Editor-in-Chief

The metabolome is the result of the combined effects of genetic and environmental influences on metabolic processes. Metabolomic studies can provide a global view of metabolism and thereby improve our understanding of the underlying biology. Advances in metabolomic technologies have shown utility for elucidating mechanisms which underlie fundamental biological processes including disease pathology. *Metabolites* is proud to be part of the development of metabolomics and we look forward to working with many of you to publish high quality metabolomic studies.

## Author Benefits

**Open Access:** free for readers, with article processing charges (APC) paid by authors or their institutions.

**High Visibility:** indexed within Scopus, SCIE (Web of Science), PubMed, PMC, Embase, CAPlus / SciFinder, and other databases.

**Journal Rank:** JCR - Q2 (*Biochemistry and Molecular Biology*) / CiteScore - Q2 (*Endocrinology, Diabetes and Metabolism*)

## Contact Us

*Metabolites* Editorial Office  
MDPI, Grosspeteranlage 5  
4052 Basel, Switzerland

Tel: +41 61 683 77 34  
[www.mdpi.com](http://www.mdpi.com)

[mdpi.com/journal/metabolites](http://mdpi.com/journal/metabolites)  
[metabolites@mdpi.com](mailto:metabolites@mdpi.com)  
[X@MetabolitesMDPI](https://twitter.com/MetabolitesMDPI)