

Proteomics and Metabolomics Studies of Food Plants

Guest Editors:

**Prof. Dr. Mariana Simões
Larraz Ferreira**

Laboratory of Protein
Biochemistry, Center for
Innovation in Mass Spectrometry,
UNIRIO, Rio de Janeiro, Brazil

**Prof. Dr. Jesús Lozano-
Sánchez**

Department of Food Science and
Nutrition, University of Granada,
Campus Universitario s/n, 18071
Granada, Spain

**Dr. Fábio César Sousa
Nogueira**

Departamento de Bioquímica,
Instituto de Química,
Universidade Federal do Rio de
Janeiro, Rio de Janeiro 21941-
909, RJ, Brazil

Deadline for manuscript
submissions:

closed (10 May 2023)

Message from the Guest Editors

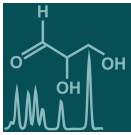
Dear Colleagues,

We would like to invite you to submit an original research or review article to the Special Issue entitled “Proteomics and Metabolomics Studies of Food Plants”.

Food plants are considered one of the most complex matrices in nature due to their richness in phytochemicals, especially secondary metabolites, and nutrients such as proteins. The development and advancement of omics technology allow the comprehensive characterization of these compounds by providing their chemical fingerprint and functional biomarkers.

This Special Issue is dedicated to metabolomics and proteomics studies that investigate food plants based on chromatography and mass spectrometry techniques. The topics of this Special Issue include: untargeted and targeted analysis of bioactive compounds, proteins and peptides of food plants; metabolomics data processing and identification/annotation of phenolic compounds; food plant imaging; bioaccessibility/bioavailability of secondary metabolites and protein digestibility assessed by omics tools; and metabolomic and proteomic applications in food plant quality control, process engineering and nutrition.





an Open Access Journal by MDPI

Editor-in-Chief

Dr. Amedeo Lonardo

1. Formerly Director of the Simple Operating Unit "Metabolic Syndrome", Azienda Ospedaliero-Universitaria, 41126 Modena, Italy
2. Formerly Professor of Internal Medicine, School of Specialization of Allergology and Clinical Immunology, University of Modena and Reggio Emilia, 41121 Modena, Italy

Message from the Editor-in-Chief

The metabolome is the result of the combined effects of genetic and environmental influences on metabolic processes. Metabolomic studies can provide a global view of metabolism and thereby improve our understanding of the underlying biology. Advances in metabolomic technologies have shown utility for elucidating mechanisms which underlie fundamental biological processes including disease pathology. *Metabolites* is proud to be part of the development of metabolomics and we look forward to working with many of you to publish high quality metabolomic studies.

Author Benefits

Open Access: free for readers, with article processing charges (APC) paid by authors or their institutions.

High Visibility: indexed within Scopus, SCIE (Web of Science), PubMed, PMC, Embase, CAPlus / SciFinder, and other databases.

Journal Rank: JCR - Q2 (*Biochemistry and Molecular Biology*) / CiteScore - Q2 (*Endocrinology, Diabetes and Metabolism*)

Contact Us

Metabolites Editorial Office
MDPI, Grosspeteranlage 5
4052 Basel, Switzerland

Tel: +41 61 683 77 34
www.mdpi.com

mdpi.com/journal/metabolites
metabolites@mdpi.com
[X@MetabolitesMDPI](https://twitter.com/MetabolitesMDPI)