



## Metabolic Impacts of Toxic Exposures on Human Health and Potential Biomarkers

Guest Editors:

**Prof. Dr. Leiliane Coelho Andre**

**Prof. Dr. Isarita Martins  
Sakakibara**

**Prof. Dr. Maria José Nunes de  
Paiva**

**Prof. Dr. Solange Cristina  
Garcia**

### Message from the Guest Editors

The impact of the environment on the development of chronic diseases is acknowledged as the main global cause of death. To this end, cardiovascular and degenerative diseases, diabetes, and cancer have gained prominence in recent years, associated with environmental exposure to chemicals and metabolic responses.

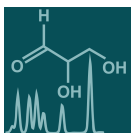
This Special Issue is devoted to the ***Metabolic Impacts of Toxic Exposures on Human Health and Potential Biomarkers*** and the topics that will be covered include (not exclusively):

Deadline for manuscript  
submissions:

**31 January 2025**

- Important concepts of metabolome analysis;
- The steps of both untargeted and targeted metabolomics workflow;
- Studies on metabolomic analyses, which provide early diagnosis of alterations in xenobiotic metabolism via metabolic patterns or signatures that indicate chemical exposure (environmental or occupational) or reveal patients' health or disease status.





an Open Access Journal by MDPI

## Editor-in-Chief

### Dr. Amedeo Lonardo

1. Formerly Director of the Simple Operating Unit "Metabolic Syndrome", Azienda Ospedaliero-Universitaria, 41126 Modena, Italy  
2. Formerly Professor of Internal Medicine, School of Specialization of Allergology and Clinical Immunology, University of Modena and Reggio Emilia, 41121 Modena, Italy

## Message from the Editor-in-Chief

The metabolome is the result of the combined effects of genetic and environmental influences on metabolic processes. Metabolomic studies can provide a global view of metabolism and thereby improve our understanding of the underlying biology. Advances in metabolomic technologies have shown utility for elucidating mechanisms which underlie fundamental biological processes including disease pathology. *Metabolites* is proud to be part of the development of metabolomics and we look forward to working with many of you to publish high quality metabolomic studies.

## Author Benefits

**Open Access:** free for readers, with article processing charges (APC) paid by authors or their institutions.

**High Visibility:** indexed within Scopus, SCIE (Web of Science), PubMed, PMC, Embase, CAPlus / SciFinder, and other databases.

**Journal Rank:** JCR - Q2 (*Biochemistry and Molecular Biology*) / CiteScore - Q2 (*Endocrinology, Diabetes and Metabolism*)

## Contact Us

*Metabolites* Editorial Office  
MDPI, Grosspeteranlage 5  
4052 Basel, Switzerland

Tel: +41 61 683 77 34  
[www.mdpi.com](http://www.mdpi.com)

[mdpi.com/journal/metabolites](http://mdpi.com/journal/metabolites)  
[metabolites@mdpi.com](mailto:metabolites@mdpi.com)  
[X@MetabolitesMDPI](https://twitter.com/MetabolitesMDPI)