

an Open Access Journal by MDPI

Application of Stable Isotope Based Tracer Analysis in Human Cells

Guest Editor:

Prof. Dr. Bart Ghesquiere
Metabolomics Expertise Center,
VIB-KU Leuven, 3000 Leuven,
Belgium

Deadline for manuscript
submissions:

closed (31 December 2022)

Message from the Guest Editor

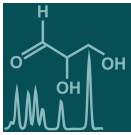
Dear Colleagues,

The use of stable isotopes in biomedical research has attracted more and more interest from the metabolomics society. Indeed, the technology of tracer metabolomics has provided unprecedented insights into metabolic pathways playing a critical role in a plethora of disease models. In this Special Issue of *Metabolites*, we would like to highlight the applicability of stable isotopes (tracer) metabolomics into human metabolism. Topics include but are not limited to molecular insights into disease mechanisms, software tools for tracer metabolomics, metabolic flux analysis, mass-spectrometry-related methodologies for tracer studies, reviews, etc.



mdpi.com/si/92447

Special Issue



an Open Access Journal by MDPI

Editor-in-Chief

Dr. Amedeo Lonardo

1. Formerly Director of the Simple Operating Unit "Metabolic Syndrome", Azienda Ospedaliero-Universitaria, 41126 Modena, Italy
2. Formerly Professor of Internal Medicine, School of Specialization of Allergology and Clinical Immunology, University of Modena and Reggio Emilia, 41121 Modena, Italy

Message from the Editor-in-Chief

The metabolome is the result of the combined effects of genetic and environmental influences on metabolic processes. Metabolomic studies can provide a global view of metabolism and thereby improve our understanding of the underlying biology. Advances in metabolomic technologies have shown utility for elucidating mechanisms which underlie fundamental biological processes including disease pathology. *Metabolites* is proud to be part of the development of metabolomics and we look forward to working with many of you to publish high quality metabolomic studies.

Author Benefits

Open Access: free for readers, with article processing charges (APC) paid by authors or their institutions.

High Visibility: indexed within Scopus, SCIE (Web of Science), PubMed, PMC, Embase, CAPlus / SciFinder, and other databases.

Journal Rank: JCR - Q2 (*Biochemistry and Molecular Biology*) / CiteScore - Q2 (*Endocrinology, Diabetes and Metabolism*)

Contact Us

Metabolites Editorial Office
MDPI, St. Alban-Anlage 66
4052 Basel, Switzerland

Tel: +41 61 683 77 34
www.mdpi.com

mdpi.com/journal/metabolites
metabolites@mdpi.com
[X@MetabolitesMDPI](https://twitter.com/MetabolitesMDPI)