

*sensors*



an Open Access Journal by MDPI

## Wireless Sensors and Machine-Learning-Based Algorithms, Systems, and Applications for Practical Positioning and Navigation Systems

Guest Editors:

**Dr. Santosh Subedi**

Research and Development  
Department, Pixii, Kristiansand,  
Norway

**Prof. Dr. Jae-Young Pyun**

Department of Information and  
Communication Engineering,  
Chosun University, Gwangju  
61452, Republic of Korea

Deadline for manuscript  
submissions:

**31 August 2024**

### Message from the Guest Editors

Dear Colleagues,

Due to the rise in smart devices and technologies, social and commercial interests in positioning and navigation systems have been increasing. Similarly, as machine learning (ML) has been widely utilized across various applications, studies on positioning, navigation, and localization systems have significantly adopted ML over the years. Meanwhile, demand for pragmatic positioning services has grown through various applications, such as indoor pathfinding and navigation, marketing, entertainment, security, and location-based information retrieval. Therefore, research and development for indoor and outdoor positioning systems has been expanded.

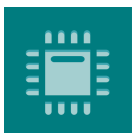
This Special Issue aims to contribute to developing ML-based positioning algorithms, systems, and applications, utilizing wireless sensors for real-time indoor and outdoor positioning and navigation systems.



[mdpi.com/si/141502](https://mdpi.com/si/141502)

# Special Issue





*sensors*



an Open Access Journal by MDPI

## Editor-in-Chief

### **Prof. Dr. Vittorio M. N. Passaro**

Dipartimento di Ingegneria  
Elettrica e dell'Informazione  
(Department of Electrical and  
Information Engineering),  
Politecnico di Bari, Via Edoardo  
Orabona n. 4, 70125 Bari, Italy

## Message from the Editor-in-Chief

*Sensors* is a leading journal devoted to fast publication of the latest achievements of technological developments and scientific research in the huge area of physical, chemical and biochemical sensors, including remote sensing and sensor networks. Both experimental and theoretical papers are published, including all aspects of sensor design, technology, proof of concept and application. *Sensors* organizes Special Issues devoted to specific sensing areas and applications each year.

## Author Benefits

**Open Access :** free for readers, with [article processing charges \(APC\)](#) paid by authors or their institutions.

**High Visibility:** indexed within [Scopus](#), [SCIE \(Web of Science\)](#), [PubMed](#), [MEDLINE](#), [PMC](#), [Ei Compendex](#), [Inspec](#), [Astrophysics Data System](#), and [other databases](#).

**Journal Rank:** JCR - Q2 (*Instruments & Instrumentation*) / CiteScore - Q1 (*Instrumentation*)

## Contact Us

*Sensors* Editorial Office  
MDPI, St. Alban-Anlage 66  
4052 Basel, Switzerland

Tel: +41 61 683 77 34  
[www.mdpi.com](http://www.mdpi.com)

[mdpi.com/journal/sensors](http://mdpi.com/journal/sensors)  
[sensors@mdpi.com](mailto:sensors@mdpi.com)  
[X@Sensors\\_MDPI](#)