



sensors



an Open Access Journal by MDPI

Biomedical Photoacoustic Imaging and Sensing Using Affordable Resources

Guest Editors:

Dr. Mithun Kuniyil Ajith Singh

Research and Business
Development Division,
CYBERDYNE Inc., Tsukuba, Japan

Dr. Wenfeng Xia

School of Biomedical
Engineering & Imaging Sciences,
King's College London, 4th Floor,
Lambeth Wing, St Thomas'
Hospital, London SE1 7EH, UK

Deadline for manuscript
submissions:

closed (31 March 2021)

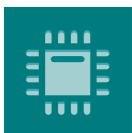
Message from the Guest Editors

Photoacoustic (PA) or optoacoustic imaging is a hybrid imaging technique with tremendous potential in multi-scale preclinical and clinical biomedical applications. PA imaging is one of the fastest-growing biomedical imaging modalities of the decade, offering scalable imaging depth and resolution, and optical spectroscopic contrast, making it a promising solution for real-time functional, molecular, and structural imaging of tissue. Biomedical PA imaging is now at an exciting stage of clinical translation and it is of paramount importance for academia and industry to come up with portable and affordable light delivery/detection solutions to accelerate the smooth transition to clinic. This Special Issue encompasses a broad range of PA imaging techniques, mainly focused on recent advances in light sources and delivery methods, and new detection strategies towards affordable point-of-care PA imaging.



mdpi.com/si/36481

Special Issue



sensors



an Open Access Journal by MDPI

Editor-in-Chief

Prof. Dr. Vittorio M. N. Passaro

Dipartimento di Ingegneria
Elettrica e dell'Informazione
(Department of Electrical and
Information Engineering),
Politecnico di Bari, Via Edoardo
Orabona n. 4, 70125 Bari, Italy

Message from the Editor-in-Chief

Sensors is a leading journal devoted to fast publication of the latest achievements of technological developments and scientific research in the huge area of physical, chemical and biochemical sensors, including remote sensing and sensor networks. Both experimental and theoretical papers are published, including all aspects of sensor design, technology, proof of concept and application. *Sensors* organizes Special Issues devoted to specific sensing areas and applications each year.

Author Benefits

Open Access : free for readers, with [article processing charges \(APC\)](#) paid by authors or their institutions.

High Visibility: indexed within [Scopus](#), [SCIE \(Web of Science\)](#), [PubMed](#), [MEDLINE](#), [PMC](#), [Ei Compendex](#), [Inspec](#), [Astrophysics Data System](#), and [other databases](#).

Journal Rank: JCR - Q2 (*Instruments & Instrumentation*) / CiteScore - Q1 (*Instrumentation*)

Contact Us

Sensors Editorial Office
MDPI, St. Alban-Anlage 66
4052 Basel, Switzerland

Tel: +41 61 683 77 34
www.mdpi.com

mdpi.com/journal/sensors
sensors@mdpi.com
[X@Sensors_MDPI](#)