



sensors



an Open Access Journal by MDPI

Human-Centric Sensing Technology and Systems

Guest Editors:

Prof. Dr. Feng Hong

Department of Computer Science
and Technology, Ocean
University of China, Qingdao,
China

Dr. Jiadi Yu

Department of Computer Science
and Engineering, Shanghai Jiao
Tong University, Shanghai
200240, China

Dr. Yan Wang

Department of Computer and
Information Sciences, Temple
University, Philadelphia, PA
19122, USA

Deadline for manuscript
submissions:

closed (30 June 2023)

Message from the Guest Editors

Dear Colleagues,

Human-centric sensing plays a crucially important role in the domains of smart-home and office environments, including safety protection, well-being monitoring/management, healthcare, and smart-appliance interaction. However, sensor technologies have several limitations relating to deployment cost, usability, and adherence issues, which render them unacceptable for practical use.

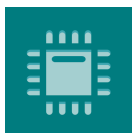
Recent novel technologies have shown the potential of reusing wireless signals (such as WiFi, mmWave, RFID, LoRa, acoustic, light, and radiofrequency) or environmental infrastructures originally designed for lighting or data transmission to sense human activities. Such studies thereby realize a set of emerging applications, ranging from intrusion detection, daily activity recognition, and gesture recognition to monitoring of vital signs and user identification, involving even finer-grained motion sensing.

The Guest Editors encourage submissions of papers addressing physical models, technologies, and applications of human-centric sensing. Manuscripts should provide content that is accessible to general audiences working in the field of sensing systems.



mdpi.com/si/105448

Special Issue



sensors



an Open Access Journal by MDPI

Editor-in-Chief

Prof. Dr. Vittorio M. N. Passaro

Dipartimento di Ingegneria
Elettrica e dell'Informazione
(Department of Electrical and
Information Engineering),
Politecnico di Bari, Via Edoardo
Orabona n. 4, 70125 Bari, Italy

Message from the Editor-in-Chief

Sensors is a leading journal devoted to fast publication of the latest achievements of technological developments and scientific research in the huge area of physical, chemical and biochemical sensors, including remote sensing and sensor networks. Both experimental and theoretical papers are published, including all aspects of sensor design, technology, proof of concept and application. *Sensors* organizes Special Issues devoted to specific sensing areas and applications each year.

Author Benefits

Open Access : free for readers, with [article processing charges \(APC\)](#) paid by authors or their institutions.

High Visibility: indexed within [Scopus](#), [SCIE \(Web of Science\)](#), [PubMed](#), [MEDLINE](#), [PMC](#), [Ei Compendex](#), [Inspec](#), [Astrophysics Data System](#), and [other databases](#).

Journal Rank: JCR - Q2 (*Chemistry, Analytical*) / CiteScore - Q1 (Instrumentation)

Contact Us

Sensors Editorial Office
MDPI, Grosspeteranlage 5
4052 Basel, Switzerland

Tel: +41 61 683 77 34
www.mdpi.com

mdpi.com/journal/sensors
sensors@mdpi.com
[X@Sensors_MDPI](#)