



sensors



an Open Access Journal by MDPI

Recent Trends in Large-Data Analytics and Machine Learning for Healthcare

Guest Editors:

Dr. Flavio Bertini

Dr. Rahimeh Rouhi

Prof. Dr. Enrique Lopez Droguett

Deadline for manuscript
submissions:
closed (15 June 2023)

Message from the Guest Editors

Dear Colleagues,

In the last decade, we have witnessed an increasing diffusion of devices and sensors capable of generating a large amount of useful data to evaluate and make decisions about the health and care of people.

This Special Issue aims to explore recent trends in large-data analytics and the application of machine learning methods for healthcare. In particular, original contributions that explore innovative data models for healthcare data; novel data analytics theories and methods; and review articles to the challenging problems of decision-making in healthcare; effectiveness and feasibility of computational solutions in the real world; and trust and privacy are welcome for this Special Issue.

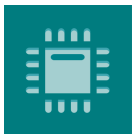
Contributions may include, but are not limited to:

- Health data
- Data analysis
- Data model
- Data integration
- Machine learning
- Deep learning



mdpi.com/si/110580

Special Issue



sensors



an Open Access Journal by MDPI

Editor-in-Chief

Prof. Dr. Vittorio M. N. Passaro

Dipartimento di Ingegneria
Elettrica e dell'Informazione
(Department of Electrical and
Information Engineering),
Politecnico di Bari, Via Edoardo
Orabona n. 4, 70125 Bari, Italy

Message from the Editor-in-Chief

Sensors is a leading journal devoted to fast publication of the latest achievements of technological developments and scientific research in the huge area of physical, chemical and biochemical sensors, including remote sensing and sensor networks. Both experimental and theoretical papers are published, including all aspects of sensor design, technology, proof of concept and application. *Sensors* organizes Special Issues devoted to specific sensing areas and applications each year.

Author Benefits

Open Access : free for readers, with [article processing charges \(APC\)](#) paid by authors or their institutions.

High Visibility: indexed within [Scopus](#), [SCIE \(Web of Science\)](#), [PubMed](#), [MEDLINE](#), [PMC](#), [Ei Compendex](#), [Inspec](#), [Astrophysics Data System](#), and [other databases](#).

Journal Rank: JCR - Q2 (Instruments and Instrumentation) / CiteScore - Q1 (Instrumentation)

Contact Us

Sensors Editorial Office
MDPI, Grosspeteranlage 5
4052 Basel, Switzerland

Tel: +41 61 683 77 34
www.mdpi.com

mdpi.com/journal/sensors
sensors@mdpi.com
[X@Sensors_MDPI](#)