



sensors



an Open Access Journal by MDPI

Learning Technology Based on Navigation Sensors

Guest Editor:

Prof. Dr. Taikjin Lee

Sensor System Research Center,
Korea Institute of Science and
Technology (KIST), Seoul, Korea

Deadline for manuscript
submissions:

closed (10 October 2022)

Message from the Guest Editor

Dear Colleagues,

Location is one of the most important aspects of modern life, specifically recognizing one's location and trajectory. Map applications such as Google Maps are used on a daily basis. However, since such programs are based on GNSS, limitations are inevitable in GNSS-denied environments such as indoor or urban spaces. Recently, research that easily combines various navigation sensors using technologies such as machine learning and deep learning and overcoming the limitations of sensors through pattern recognition is evolving. In particular, these technologies are serving as solutions to the “seamless” problem.

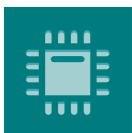
This Special Issue includes maximizing the performance of navigation sensors through pattern recognition technology. Thus, we look forward to your proposals on new localization and pattern recognition technologies that are more accurate, highly available, and seamless. We encourage authors to submit new research results about technological innovations and novel applications for pattern recognition and localization.

For more information, please access the website at:
https://www.mdpi.com/journal/sensors/special_issues/PRLBNS



[mdpi.com/si/54712](https://www.mdpi.com/si/54712)

Special Issue



sensors



an Open Access Journal by MDPI

Editor-in-Chief

Prof. Dr. Vittorio M. N. Passaro

Dipartimento di Ingegneria
Elettrica e dell'Informazione
(Department of Electrical and
Information Engineering),
Politecnico di Bari, Via Edoardo
Orabona n. 4, 70125 Bari, Italy

Message from the Editor-in-Chief

Sensors is a leading journal devoted to fast publication of the latest achievements of technological developments and scientific research in the huge area of physical, chemical and biochemical sensors, including remote sensing and sensor networks. Both experimental and theoretical papers are published, including all aspects of sensor design, technology, proof of concept and application. *Sensors* organizes Special Issues devoted to specific sensing areas and applications each year.

Author Benefits

Open Access : free for readers, with [article processing charges \(APC\)](#) paid by authors or their institutions.

High Visibility: indexed within [Scopus](#), [SCIE \(Web of Science\)](#), [PubMed](#), [MEDLINE](#), [PMC](#), [Ei Compendex](#), [Inspec](#), [Astrophysics Data System](#), and [other databases](#).

Journal Rank: JCR - Q2 (Instruments and Instrumentation) / CiteScore - Q1 (Instrumentation)

Contact Us

Sensors Editorial Office
MDPI, Grosspeteranlage 5
4052 Basel, Switzerland

Tel: +41 61 683 77 34
www.mdpi.com

mdpi.com/journal/sensors
sensors@mdpi.com
[X@Sensors_MDPI](#)