



sensors



an Open Access Journal by MDPI

RFID and Wireless Sensor Networks: Recent Advances in the Design of IoT Applications

Guest Editors:

Dr. Asier Perallos

Dr. Hugo Landaluce

Dr. Laura Arjona

Dr. Ignacio Angulo Martínez

Message from the Guest Editors

This Special Issue aims to gather a collection of papers, both from academic and industrial authors, focused on emergent challenges and applications that adopt RFID, WSN, or both technologies integrated to provide innovative IoT solutions in key sectors, such as supply chain management, smart cities, smart factories, health, sports, and retail, among others.

Deadline for manuscript
submissions:

closed (1 December 2020)

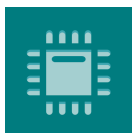
Keywords

- Passive sensors
- Computational RFID
- RFID tags as sensors
- Sensor networks with RFID
- Wearable RFID technology
- Antenna and circuits design
- Energy-harvesting techniques
- Standards and communication protocols
- Wireless communications
- Middleware for sensing and computational RFID
- Fog/Edge computing architectures
- RFID/WSN-based IoT applications



mdpi.com/si/32479

Special Issue



sensors



an Open Access Journal by MDPI

Editor-in-Chief

Prof. Dr. Vittorio M. N. Passaro

Dipartimento di Ingegneria
Elettrica e dell'Informazione
(Department of Electrical and
Information Engineering),
Politecnico di Bari, Via Edoardo
Orabona n. 4, 70125 Bari, Italy

Message from the Editor-in-Chief

Sensors is a leading journal devoted to fast publication of the latest achievements of technological developments and scientific research in the huge area of physical, chemical and biochemical sensors, including remote sensing and sensor networks. Both experimental and theoretical papers are published, including all aspects of sensor design, technology, proof of concept and application. *Sensors* organizes Special Issues devoted to specific sensing areas and applications each year.

Author Benefits

Open Access : free for readers, with [article processing charges \(APC\)](#) paid by authors or their institutions.

High Visibility: indexed within [Scopus](#), [SCIE \(Web of Science\)](#), [PubMed](#), [MEDLINE](#), [PMC](#), [Ei Compendex](#), [Inspec](#), [Astrophysics Data System](#), and [other databases](#).

Journal Rank: JCR - Q2 (*Chemistry, Analytical*) / CiteScore - Q1 (Instrumentation)

Contact Us

Sensors Editorial Office
MDPI, Grosspeteranlage 5
4052 Basel, Switzerland

Tel: +41 61 683 77 34
www.mdpi.com

mdpi.com/journal/sensors
sensors@mdpi.com
[X@Sensors_MDPI](#)