



## Emerging Sensors Techniques and Technologies for Intelligent Environments

Guest Editors:

**Dr. Ionut Anghel**

**Dr. Tudor Cioara**

**Dr. Marcel Antal**

Deadline for manuscript  
submissions:

**closed (15 June 2022)**

### Message from the Guest Editors

Dear Colleagues,

The trending techniques, models, algorithms, and technologies for managing indoor and outdoor intelligent environments rely heavily on data acquisition through a diversity of heterogeneous Internet of Things (IoT) devices and sensors. They process and analyze large and heterogeneous streams of data with the general objective of extracting knowledge and making reinforced decisions for adapting to complex events from such environments.

In this context, innovative services supported by sensor-based monitoring can be developed, enabling the intelligent management of smart cities, smart grids, factories of the future, logistics chains, etc. These services can also benefit from the emerging promising technologies that can provide the required infrastructure for adding the envisioned intelligence: cloud-based models, deep learning, fog, and edge computing, blockchain, and digital twins.

This Special Issue offers opportunities for publishing innovative solutions, techniques, and technologies for the development and management of intelligent environments.

For more information, please click: [mdpi.com/si/50920](https://mdpi.com/si/50920).



[mdpi.com/si/50920](https://mdpi.com/si/50920)

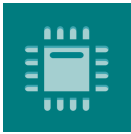
Dr. Ionut Anghel

Dr. Tudor Cioara

Dr. Marcel Antal

Guest Editors

**Special** Issue



*sensor*

Indexed in:  
**PubMed**

CITESCORE  
**7.3**

IMPACT  
FACTOR  
**3.4**

an Open Access  
Journal by MDPI

## Editor-in-Chief

### **Prof. Dr. Vittorio M. N. Passaro**

Dipartimento di Ingegneria  
Elettrica e dell'Informazione  
(Department of Electrical and  
Information Engineering),  
Politecnico di Bari, Via Edoardo  
Orabona n. 4, 70125 Bari, Italy

## Author Benefits

**Open Access** : free for readers, with [article processing charges \(APC\)](#) paid by authors or their institutions.

**High Visibility**: indexed within [Scopus](#), [SCIE \(Web of Science\)](#), [PubMed](#), [MEDLINE](#), [PMC](#), [Ei Compendex](#), [Inspec](#), [Astrophysics Data System](#), and [other databases](#).

**Journal Rank**: JCR - Q2 (*Chemistry, Analytical*) / CiteScore - Q1 (Instrumentation)

## Message from the Editor-in-Chief

*Sensors* is a leading journal devoted to fast publication of the latest achievements of technological developments and scientific research in the huge area of physical, chemical and biochemical sensors, including remote sensing and sensor networks. Both experimental and theoretical papers are published, including all aspects of sensor design, technology, proof of concept and application. *Sensors* organizes Special Issues devoted to specific sensing areas and applications each year.

## Contact Us

*Sensors* Editorial Office  
MDPI, Grosspeteranlage 5  
4052 Basel, Switzerland

Tel: +41 61 683 77 34  
[www.mdpi.com](http://www.mdpi.com)

[mdpi.com/journal/sensors](http://mdpi.com/journal/sensors)  
[sensors@mdpi.com](mailto:sensors@mdpi.com)  
[X@Sensors\\_MDPI](#)