

sensors



an Open Access Journal by MDPI

State-of-the-Art Sensors Technology in Japan 2015

Guest Editors:

Prof. Dr. Yoshiteru Ishida

Department of Computer Science
and Engineering, Toyohashi
University of Technology,
Toyohashi 441-8580, Japan

Dr. Masahiro Tokumitsu

Department of Electrical and
Control Engineering, Yonago
National College of Technology,
Hikonacho 4448, Yonago, Tottori
683-0854, Japan

Deadline for manuscript
submissions:

closed (31 May 2015)

Message from the Guest Editors

Dear Colleagues,

The aim of this special issue is to provide a comprehensive view on the state-of-the-art sensors technology in Japan. Research articles are solicited which will provide a consolidated state-of-the-art in this area. The Special Issue will publish those full research, review and high rated manuscripts addressing the above topic.

Prof. Dr. Yoshiteru Ishida

Dr. Masahiro Tokumitsu

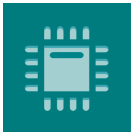
Guest Editors

<http://publicationslist.org/ishida>



mdpi.com/si/3823

Special Issue



sensors



an Open Access Journal by MDPI

Editor-in-Chief

Prof. Dr. Vittorio M. N. Passaro

Dipartimento di Ingegneria
Elettrica e dell'Informazione
(Department of Electrical and
Information Engineering),
Politecnico di Bari, Via Edoardo
Orabona n. 4, 70125 Bari, Italy

Message from the Editor-in-Chief

Sensors is a leading journal devoted to fast publication of the latest achievements of technological developments and scientific research in the huge area of physical, chemical and biochemical sensors, including remote sensing and sensor networks. Both experimental and theoretical papers are published, including all aspects of sensor design, technology, proof of concept and application. *Sensors* organizes Special Issues devoted to specific sensing areas and applications each year.

Author Benefits

Open Access : free for readers, with [article processing charges \(APC\)](#) paid by authors or their institutions.

High Visibility: indexed within [Scopus](#), [SCIE \(Web of Science\)](#), [PubMed](#), [MEDLINE](#), [PMC](#), [Ei Compendex](#), [Inspec](#), [Astrophysics Data System](#), and [other databases](#).

Journal Rank: JCR - Q2 (*Chemistry, Analytical*) / CiteScore - Q1 (Instrumentation)

Contact Us

Sensors Editorial Office
MDPI, St. Alban-Anlage 66
4052 Basel, Switzerland

Tel: +41 61 683 77 34
www.mdpi.com

mdpi.com/journal/sensors
sensors@mdpi.com
[X@Sensors_MDPI](#)