

## Topical Collection

# Machine Learning and AI for Sensors

### Message from the Collection Editors

We invite you to submit your latest research in the area of “Machine Learning and Artificial Intelligence Techniques Employing All Kinds of Sensory Devices”. The application domain of this topic covers a huge area; from smart devices to smart cities, from geoscience and geospatial applications to medical prognosis and treatment, and so on. Recent Machine Learning (ML) and Artificial Intelligence (AI) advances cover areas from zero and single-shot algorithms to very deep and complex neural network algorithms for vast amounts of data. On the other hand, advances in sensors and sensory technology (local and remote) are responsible for a profound impact on our daily life and all aspects of current industrial and technological developments. Combining the two areas creates an extremely interesting, challenging, and promising interdisciplinary area of research deploying new forefront research and development opportunities. For detailed information, please visit [here](#). Prof. Dr. Panagiotis E. Pintelas

---

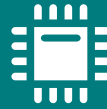
### Collection Editors

Prof. Dr. Panagiotis Pintelas

Dr. Sotiris Kotsiantis

Dr. Ioannis E. Livieris

---



## Sensors

---

an Open Access Journal  
by MDPI

---

Impact Factor 3.5  
CiteScore 8.2  
Indexed in PubMed



[mdpi.com/si/62252](https://mdpi.com/si/62252)

*Sensors*  
Editorial Office  
MDPI, Grosspeteranlage 5  
4052 Basel, Switzerland  
Tel: +41 61 683 77 34  
[sensors@mdpi.com](mailto:sensors@mdpi.com)

[mdpi.com/journal/  
sensors](https://mdpi.com/journal/sensors)





# Sensors

---

an Open Access Journal  
by MDPI

---

Impact Factor 3.5  
CiteScore 8.2  
Indexed in PubMed



[mdpi.com/journal/  
sensors](https://mdpi.com/journal/sensors)



## About the Journal

### Message from the Editor-in-Chief

*Sensors* is a leading journal devoted to fast publication of the latest achievements of technological developments and scientific research in the huge area of physical, chemical and biochemical sensors, including remote sensing and sensor networks. Both experimental and theoretical papers are published, including all aspects of sensor design, technology, proof of concept and application. *Sensors* organizes Special Issues devoted to specific sensing areas and applications each year.

---

### Editor-in-Chief

Prof. Dr. Vittorio M. N. Passaro  
Department of Electrical and Information Engineering, Politecnico di Bari, Via Orabona 4, 70126 Bari, Italy

---

### Author Benefits

#### Open Access:

free for readers, with article processing charges (APC) paid by authors or their institutions.

#### High Visibility:

indexed within Scopus, SCIE (Web of Science), PubMed, MEDLINE, PMC, Ei Compendex, Inspec, Astrophysics Data System, and other databases.

#### Journal Rank:

JCR - Q2 (Instruments and Instrumentation) / CiteScore - Q1 (Instrumentation)